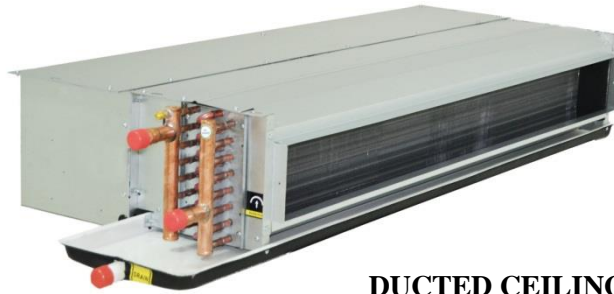




**42ME SERIES
CHILLED WATER FAN COIL UNITS FOR
CHILLER [STANDARD ΔT] AND DISTRICT
COOLING APPLICATION
(200 to 3000 CFM) – 50Hz**



**DUCTED CEILING
SUSPENDED FAN COIL UNITS**



**DOUBLE SKIN DUCTED CEILING
SUSPENDED FAN COIL UNITS**



**DECORATIVE CEILING SUSPENDED
FAN COIL UNITS**



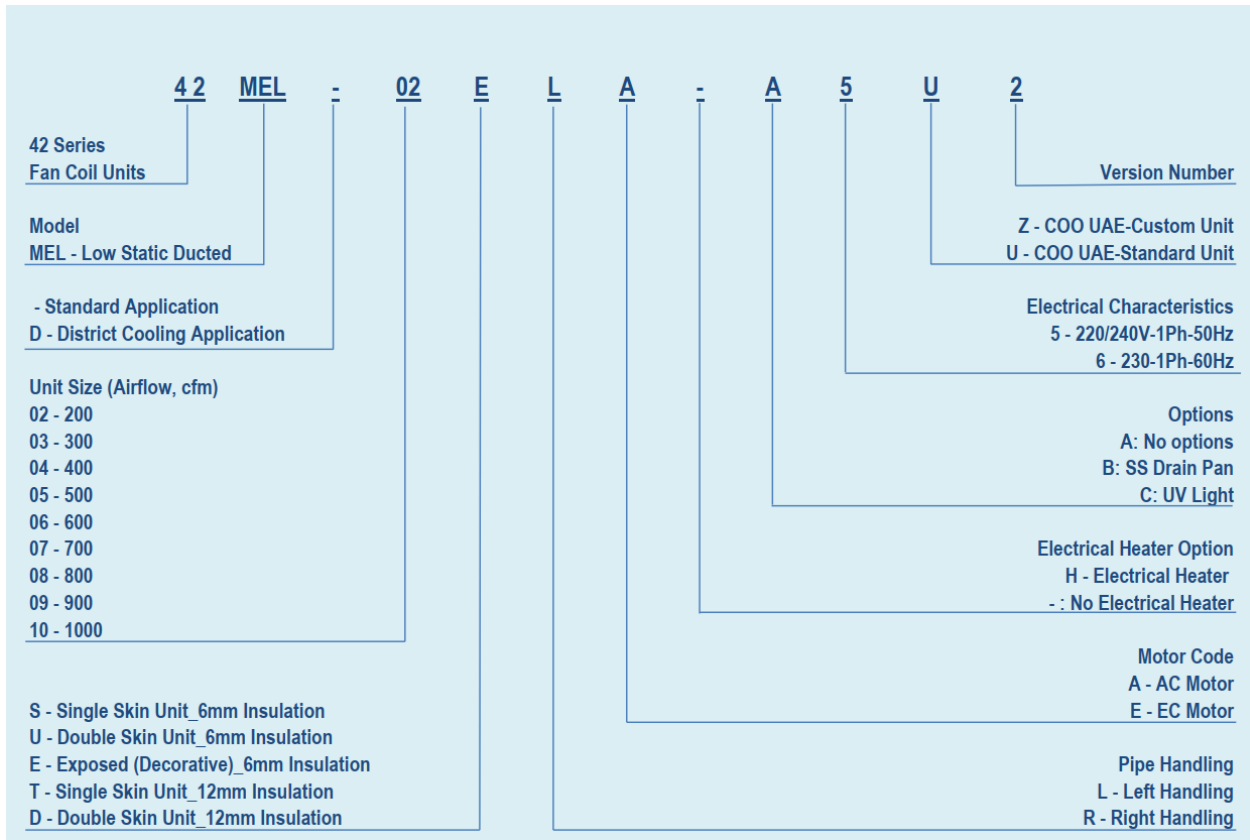
TABLE OF CONTENTS

	<u>Page</u>
MODEL NUMBER NOMENCLATURE	3
INTRODUCTION	4
TECHNICAL DATA	5-16
MEL	5-7
MELD	8-10
MEH	11-13
MEHD	14-16
UNIT DIMENSIONS	17-28
MEL	17-19
MELD	20-22
MEH	23-25
MEHD	26-28
PERFORMANCE RATING	29-34
MEL	29-30
MELD	30-31
MEH	32-33
MEHD	33-34
ELECTRICAL DATA	35-38
EC MOTOR (OPTIONAL FEATURE)	39
WIRING DIAGRAM	40-42
MEL & MELD	40
MEH & MEHD	40
MEL & MELD – EC MOTOR	41
MEH & MEHD – EC MOTOR	42
GUIDE SPECIFICATIONS	43-44

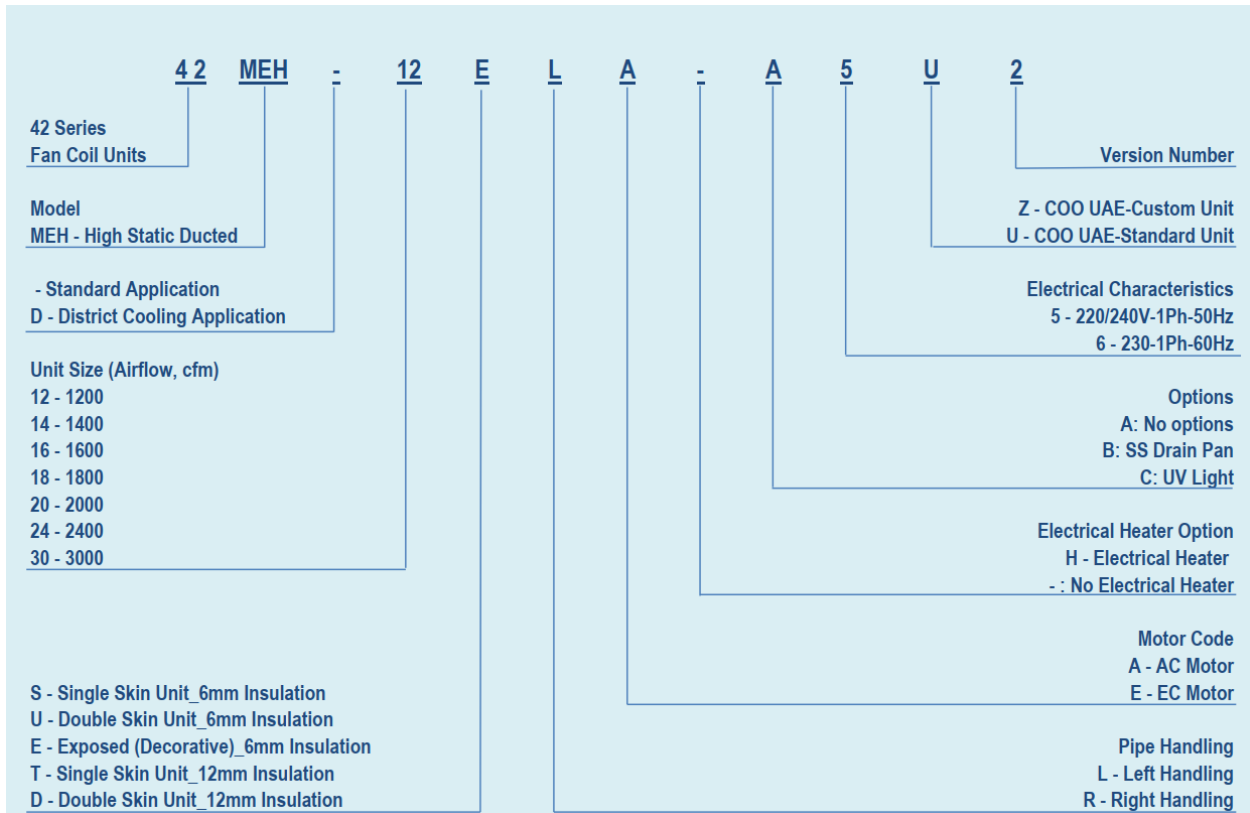


MODEL NUMBER NOMENCLATURE

MODEL: 42 MEL / MELD



MODEL: 42 MEH / MEHD



INTRODUCTION

Carrier fan coil units are the ideal solution for providing localized air conditioning to ensure comfortable temperatures in spaces of any size. The unit consists of a fan which passes air over a heating and cooling coil to condition the temperature of the space it serves.

Carrier fan coil unit's coil is supplied by the building's low pressure chilled water systems meaning that it can be installed anywhere where a water & electrical supply is available. The simple nature of the product's operation makes for easy and cost effective installation in new build or refurbished offices, schools, hotels, houses & apartments.

Carrier fan coil units are ideally suited for installation in chilled water applications to meet air conditioning requirements of individual rooms. Units are designed to address the need for greater reliability, guaranteed performance, quieter operation, low installation height and better indoor air quality.

Carrier fan coil units are easily installed and serviced. Fan coil units feature high operating

efficiency, low operating cost and quiet, energy efficient fan motors.

The main components of fan coil units are:

- Fan,
- Coil (Heat exchanger).
- Air Filter

The heat exchanger receives cold water from a cooling source. The fan spreads the heat or coolness in order to condition the space.

Features

- Cleaner, quieter and more efficient in design.
- Heavy gauge galvanized casing & fan housing
- Hi-efficiency forward curved fan for quiet operation.
- Hi-efficiency, low power consumption electric motor.
- Insulated polyester powder coated galvanized drain pan.
- Quick electrical connections.
- Manual air vent on coil header**.
- Interchangeable control box location at sites**.
- Additional mounting holes for maintenance**.

*** Features are not applicable for Decorative ceiling type fan coil units.*

COMPUTER SELECTION (FCU Genius)

We have made available a computer program (FCU Genius) to finalize your selections. Please contact manufacturer's representative for a computer selection based on your "FCU Genius" the design parameters of your application.

Quality Assurance

Carrier fan coil units are tested in accordance with Eurovent standard. Each coil is factory tested for leakage at 350 psig air pressure with coil submerged in water. Factory is ISO-9001 certified.



Certificate N° 15.06.001

[Carrier Eurovent-Certification web-link](#)

The information herein provides guidance on how the product should be selected, installed, operated and maintained. Qualified and Professional personnel should be used in all instances to determine exact methods of working using these instructions as a guide to good practice.

TECHNICAL DATA

42MEL SERIES LOW STATIC WITH PLENUM - STANDARD ΔT

DUCTED

PERFORMANCE			MEL-02S	MEL-03S	MEL-04S	MEL-05S	MEL-06S	MEL-07S	MEL-08S	MEL-09S	MEL-10S	
			LOW STATIC , NORMAL COOLING UNIT									
Nominal Air Volume	High	CFM	261	369	428	592	689	772	858	939	1037	
		L/S	123	174	202	280	325	364	405	443	490	
Cooling Capacity (Fluid)*		KW	1.94	2.42	3.1	4.28	4.73	4.91	4.99	5.35	7.58	
		BTU/HR	6619	8257	10577	14603	16139	16753	17026	18254	25863	
AC Motor Nominal Power Output		W	50	50	80	80	80	125	125	150	150	
Motor Current		AMP	Refer Page 35									
Sound Pressure	High	dB (A)	44	44	46	50	51	51	52	52	53	
	Med		42	42	43	47	47	47	48	48	49	
	Low		39	40	40	41	42	43	44	44	45	
Water Flow		L/S	0.083	0.103	0.132	0.182	0.201	0.209	0.212	0.228	0.323	
Water Pressure Drop		KPA	5.2	8.2	6.4	14	18.9	5.4	7.6	8.6	11.9	
Fan Type		Centrifugal Forward-Curved Blades										
Motor Type		Permanent Split Capacitor										
Coil	Rows	NOS.	4									
	Face Area	SQ. FT	0.87	1.09	1.31	1.53	1.53	1.97	1.97	1.97	2.57	
	Coil Water Volume	M³	0.001	0.0012	0.0014	0.0016	0.0016	0.002	0.002	0.002	0.0026	
	Working Pressure	MPa	1.72									
Connections	In-Out (Thread) / Adapter Material		1/2" NPT / Brass, Externally Threaded					3/4" NPT / Brass, Externally Threaded				
	Condensate Drain / Material		3/4" NPT / GI Steel , Externally Threaded									
Cabinet Size	Height	MM	260 +/- 5				300 +/- 5					
	Width	MM	550 +/- 5				600 +/- 5					
	Length	MM	690	790	890	990	990	1190	1190	1190	1440	
Casing Material / Thickness		Galvanized Steel / up to 1.0 MM										
Casing Treatment / External Finish		Non-painted , Z275 (G90) Zinc Coating										
Net Weight		KG	16	18	20	23	24	28	28	28	36	

Note:
 * Based on motor at high speed, standard air, dry coil and 50Pa ESP operation; 5.6°C water temperature rise; entering air temperature 24.4°C DB; 17.2°C WB; entering water temperature 7.2°C.

Electronically Commutated Motor (ECM) is available for all sizes - Optional.



Controller (Optional)

-- For other design conditions, please apply the selection program to finalize your applications --

TECHNICAL DATA

42MEL SERIES LOW STATIC WITH PLENUM - STANDARD ΔT

DUCTED-DOUBLE SKIN

PERFORMANCE			MEL-02D	MEL-03D	MEL-04D	MEL-05D	MEL-06D	MEL-07D	MEL-08D	MEL-09D	MEL-10D	
			LOW STATIC , NORMAL COOLING UNIT									
Nominal Air Volume	High	CFM	261	369	428	592	689	772	858	939	1037	
		L/S	123	174	202	280	325	364	405	443	490	
Cooling Capacity (Fluid)*		KW	1.94	2.42	3.1	4.28	4.73	4.91	4.99	5.35	7.58	
		BTU/HR	6619	8257	10577	14603	16139	16753	17026	18254	25863	
AC Motor Nominal Power Output		W	50	50	80	80	80	125	125	150	150	
Motor Current		AMP	Refer Page 35									
Sound Pressure	High	dB (A)	44	44	46	50	51	51	52	52	53	
	Med		42	42	43	47	47	47	48	48	49	
	Low		39	40	40	41	42	43	44	44	45	
Water Flow		L/S	0.083	0.103	0.132	0.182	0.201	0.209	0.212	0.228	0.323	
Water Pressure Drop		KPA	5.2	8.2	6.4	14	18.9	5.4	7.6	8.6	11.9	
Fan Type		Centrifugal Forward-Curved Blades										
Motor Type		Permanent Split Capacitor										
Coil	Rows	NOS.	4									
	Face Area	SQ. FT	0.87	1.09	1.31	1.53	1.53	1.97	1.97	1.97	2.57	
	Coil Water Volume	M³	0.001	0.0012	0.0014	0.0016	0.0016	0.002	0.002	0.002	0.0026	
	Working Pressure	MPa	1.72									
Connections	In-Out (Thread) / Adapter Material		1/2" NPT / Brass, Externally Threaded					3/4" NPT / Brass, Externally Threaded				
	Condensate Drain / Material		3/4" NPT / GI Steel , Externally Threaded									
Cabinet Size	Height	MM	280 +/- 5				300 +/- 5					
	Width	MM	550 +/- 5				600 +/- 5					
	Length	MM	565	665	765	865	865	1065	1065	1065	1340	
Casing Material / Thickness		Galvanized Steel / up to 1.0 MM										
Casing Treatment / External Finish		Non-painted , Z275 (G90) Zinc Coating										
Net Weight		KG	20	23	25	29	30	35	35	35	45	

Note:
 * Based on motor at high speed, standard air, dry coil and 50Pa ESP operation; 5.6°C water temperature rise; entering air temperature 24.4°C DB; 17.2°C WB; entering water temperature 7.2°C.

Electronically Commutated Motor (ECM) is available for all sizes - Optional.



Controller (Optional)

-- For other design conditions, please apply the selection program to finalize your applications --

TECHNICAL DATA

42MEL SERIES WITH CABINET - STANDARD ΔT

EXPOSED DECORATIVE

PERFORMANCE			MEL-02E	MEL-03E	MEL-04E	MEL-05E	MEL-06E	MEL-07E	MEL-08E	MEL-09E	MEL-10E	
			LOW STATIC , NORMAL COOLING UNIT									
Nominal Air Volume	High	CFM	342	501	557	794	831	907	1004	1034	1194	
		L/S	161	236	263	375	392	428	474	488	563	
Cooling Capacity (Fluid)*		KW	2.38	3.19	3.94	5.55	5.56	5.80	5.87	5.91	8.52	
		BTU/HR	8121	10884	13443	18937	18971	19790	20028	20165	29070	
AC Motor Nominal Power Output		W	50	50	80	80	80	125	125	150	150	
Motor Current		AMP	Refer Page 35									
Sound Pressure	High	dB (A)	44	44	46	50	51	51	52	52	53	
	Med		42	42	43	47	47	47	48	48	49	
	Low		39	40	40	41	42	43	44	44	45	
Water Flow		L/S	0.101	0.136	0.168	0.236	0.237	0.247	0.25	0.252	0.363	
Water Pressure Drop		KPA	7.7	13.8	10	22.9	25.6	7.4	10.3	10.3	14.9	
Fan Type		Centrifugal Forward-Curved Blades										
Motor Type		Permanent Split Capacitor										
Coil	Rows	NOS.	4									
	Face Area	SQ. FT	0.87	1.09	1.31	1.53	1.53	1.97	1.97	1.97	2.57	
	Coil Water Volume	M³	0.001	0.0012	0.0014	0.0016	0.0016	0.002	0.002	0.002	0.0026	
	Working Pressure	MPa	1.72									
Connections	In-Out (Thread) / Adapter Material		1/2" NPT / Brass, Externally Threaded					3/4" NPT / Brass, Externally Threaded				
	Condensate Drain / Material		3/4" NPT / GI Steel , Externally Threaded									
Cabinet Size	Height	MM	280 +/- 5					300 +/- 5				
	Width	MM	530 +/- 5					580 +/- 5				
	Length	MM	565	665	765	865	865	1065	1065	1065	1340	
Casing Material / Thickness		Galvanized Steel / up to 1.0 MM										
Casing Treatment / External Finish		Polyester powder coated / RAL9002										
Net Weight		KG	16	18	20	23	24	28	28	28	36	

Note:
 * Based on motor at high speed, standard air, dry coil and 0Pa ESP operation; 5.6°C water temperature rise; entering air temperature 24.4°C DB; 17.2°C WB; entering water temperature 7.2°C.

Electronically Commutated Motor (ECM) is available for all sizes - Optional.



Controller (Optional)

- - For other design conditions, please apply the selection program to finalize your applications - -

TECHNICAL DATA

42MELD SERIES LOW STATIC WITH PLENUM – DISTRICT COOLING HIGH AT

DUCTED

PERFORMANCE			MELD02S	MELD03S	MELD04S	MELD05S	MELD06S	MELD07S	MELD08S	MELD09S	MELD10S
			LOW STATIC , DISTRICT COOLING UNIT								
Nominal Air Volume	High	CFM	261	369	428	592	689	772	858	939	1037
		L/S	123	174	202	280	325	364	405	443	490
Cooling Capacity (Fluid)*		KW	1.64	2.65	3.04	4.2	5.39	5.75	6.79	7.22	8.08
		BTU/HR	5596	9042	10372	14330	18391	19619	23167	24635	27569
AC Motor Nominal Power Output		W	50	50	80	80	80	125	125	150	150
Motor Current		AMP	Refer Page 36								
Sound Pressure	High	dB (A)	44	44	46	50	51	51	52	52	53
	Med		42	42	43	47	47	47	48	48	49
	Low		39	40	40	41	42	43	44	44	45
Water Flow		L/S	0.044	0.071	0.081	0.113	0.144	0.154	0.182	0.193	0.217
Water Pressure Drop		KPA	6.6	14.8	6.7	14.7	21.2	23.5	28	30.5	22.6
Fan Type			Centrifugal Forward-Curved Blades								
Motor Type			Permanent Split Capacitor								
Coil	Rows	NOS.	4								
	Face Area	SQ. FT	0.87	1.09	1.31	1.53	1.53	1.97	1.97	1.97	2.57
	Coil Water Volume	M ³	0.001	0.0012	0.0014	0.0016	0.0016	0.002	0.002	0.002	0.0026
	Working Pressure	MPa	1.72								
Connections	In-Out (Thread) / Adapter Material		1/2" NPT / Brass, Externally Threaded				3/4" NPT / Brass, Externally Threaded				
	Condensate Drain / Material		3/4" NPT / GI Steel , Externally Threaded								
Cabinet Size	Height	MM	260 +/- 5				300 +/- 5				
	Width	MM	550 +/- 5				600 +/- 5				
	Length	MM	690	790	890	990	990	1190	1190	1190	1440
Casing Material / Thickness			Galvanized Steel / up to 1.0 MM								
Casing Treatment / External Finish			Non-painted , Z275 (G90) Zinc Coating								
Net Weight		KG	16	18	20	23	24	28	28	28	36

Note:
 * Based on motor at high speed, standard air, dry coil and 50Pa ESP operation; 8.9°C water temperature rise; entering air temperature 24.4°C DB; 17.2°C WB; entering water temperature 5.5°C.

Electronically Commutated Motor (ECM) is available for all sizes - Optional.



Controller (Optional)

- - For other design conditions, please apply the selection program to finalize your applications - -

TECHNICAL DATA

42MELD SERIES LOW STATIC WITH PLENUM – DISTRICT COOLING HIGH ΔT

DUCTED-DOUBLE SKIN

PERFORMANCE			MELD02D	MELD03D	MELD04D	MELD05D	MELD06D	MELD07D	MELD08D	MELD09D	MELD10D	
			LOW STATIC , DISTRICT COOLING UNIT									
Nominal Air Volume	High	CFM	261	369	428	592	689	772	858	939	1037	
		L/S	123	174	202	280	325	364	405	443	490	
Cooling Capacity (Fluid)*		KW	1.64	2.65	3.04	4.2	5.39	5.75	6.79	7.22	8.08	
		BTU/HR	5596	9042	10372	14330	18391	19619	23167	24635	27569	
AC Motor Nominal Power Output		W	50	50	80	80	80	125	125	150	150	
Motor Current		AMP	Refer Page 36									
Sound Pressure	High	dB (A)	44	44	46	50	51	51	52	52	53	
	Med		42	42	43	47	47	47	48	48	49	
	Low		39	40	40	41	42	43	44	44	45	
Water Flow		L/S	0.044	0.071	0.081	0.113	0.144	0.154	0.182	0.193	0.217	
Water Pressure Drop		KPA	6.6	14.8	6.7	14.7	21.2	23.5	28	30.5	22.6	
Fan Type		Centrifugal Forward-Curved Blades										
Motor Type		Permanent Split Capacitor										
Coil	Rows	NOS.	4									
	Face Area	SQ. FT	0.87	1.09	1.31	1.53	1.53	1.97	1.97	1.97	2.57	
	Coil Water Volume	M³	0.001	0.0012	0.0014	0.0016	0.0016	0.002	0.002	0.002	0.0026	
	Working Pressure	MPa	1.72									
Connections	In-Out (Thread) / Adapter Material		1/2" NPT / Brass, Externally Threaded					3/4" NPT / Brass, Externally Threaded				
	Condensate Drain / Material		3/4" NPT / GI Steel , Externally Threaded									
Cabinet Size	Height	MM	280 +/- 5					300 +/- 5				
	Width	MM	550 +/- 5					600 +/- 5				
	Length	MM	565	665	765	865	865	1065	1065	1065	1340	
Casing Material / Thickness		Galvanized Steel / up to 1.0 MM										
Casing Treatment / External Finish		Non-painted , Z275 (G90) Zinc Coating										
Net Weight		KG	20	23	25	29	30	35	35	35	45	

Note:
 * Based on motor at high speed, standard air, dry coil and 50Pa ESP operation; 8.9°C water temperature rise; entering air temperature 24.4°C DB;17.2°C WB; entering water temperature 5.5°C.

Electronically Commutated Motor (ECM) is available for all sizes - Optional.



Controller (Optional)

-- For other design conditions, please apply the selection program to finalize your applications --

TECHNICAL DATA

42MELD SERIES WITH CABINET – DISTRICT COOLING HIGH ΔT

EXPOSED DECORATIVE

PERFORMANCE			MELD02E	MELD03E	MELD04E	MELD05E	MELD06E	MELD07E	MELD08E	MELD09E	MELD10E	
			LOW STATIC , DISTRICT COOLING UNIT									
Nominal Air Volume	High	CFM	342	501	557	794	831	907	1004	1034	1194	
		L/S	161	236	263	375	392	428	474	488	563	
Cooling Capacity (Fluid)*		KW	2.00	3.53	3.75	5.63	6.5	6.63	7.75	7.8	9.18	
		BTU/HR	6824	12044	12795	19210	22178	22622	26443	26614	31322	
AC Motor Nominal Power Output		W	50	50	80	80	80	125	125	150	150	
Motor Current		AMP	Refer Page 36									
Sound Pressure	High	dB (A)	44	44	46	50	51	51	52	52	53	
	Med		42	42	43	47	47	47	48	48	49	
	Low		39	40	40	41	42	43	44	44	45	
Water Flow		L/S	0.054	0.094	0.101	0.151	0.174	0.178	0.208	0.209	0.246	
Water Pressure Drop		KPA	16.7	25.2	9.9	25.5	30.2	30.7	36	35.4	28.7	
Fan Type		Centrifugal Forward-Curved Blades										
Motor Type		Permanent Split Capacitor										
Coil	Rows	NOS.	4									
	Face Area	SQ. FT	0.87	1.09	1.31	1.53	1.53	1.97	1.97	1.97	2.57	
	Coil Water Volume	M³	0.001	0.0012	0.0014	0.0016	0.0016	0.002	0.002	0.002	0.0026	
	Working Pressure	MPa	1.72									
Connections	In-Out (Thread) / Adapter Material		1/2" NPT / Brass, Externally Threaded					3/4" NPT / Brass, Externally Threaded				
	Condensate Drain / Material		3/4" NPT / GI Steel , Externally Threaded									
Cabinet Size	Height	MM	280 +/- 5					300 +/- 5				
	Width	MM	530 +/- 5					580 +/- 5				
	Length	MM	565	665	765	865	865	1065	1065	1065	1340	
Casing Material / Thickness		Galvanized Steel / up to 1.0 MM										
Casing Treatment / External Finish		Polyester powder coated / RAL9002										
Net Weight		KG	16	18	20	23	24	28	28	28	36	

Note:
 * Based on motor at high speed, standard air, dry coil and 0Pa ESP operation; 8.9°C water temperature rise; entering air temperature 24.4°C DB; 17.2°C WB; entering water temperature 5.5°C.

Electronically Commutated Motor (ECM) is available for all sizes - Optional.



Controller (Optional)

-- For other design conditions, please apply the selection program to finalize your applications --

TECHNICAL DATA

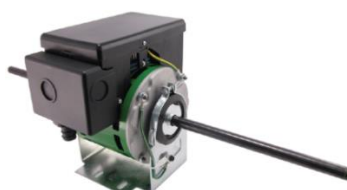
42MEH SERIES HIGH STATIC WITH PLENUM - STANDARD ΔT

DUCTED

PERFORMANCE			MEH-12S	MEH-14S	MEH-16S	MEH-18S	MEH-20S	MEH-24S	MEH-30S
			HIGH STATIC , NORMAL COOLING UNIT						
Nominal Air Volume	High	CFM	1050	1404	1560	1647	1863	2310	3075
		L/S	496	663	736	777	879	1090	1451
Cooling Capacity (Fluid)*		KW	7.14	9.05	10.86	11.58	13.48	15.69	20.32
		BTU/HR	24362	30879	37054	39511	45994	53534	69332
AC Motor Nominal Power Output		W	300	200	250	300	500	500	800
Motor Current		AMP	Refer Page 37						
Sound Pressure	High	dB (A)	53	54	55	56	56	58	58
	Med		51	53	54	54	54	57	57
	Low		49	50	51	51	52	52	52
Water Flow		L/S	0.304	0.385	0.462	0.493	0.574	0.668	0.865
Water Pressure Drop		KPA	11.4	10.6	11.7	12.9	13	23.8	29.1
Fan Type			Centrifugal Forward-Curved Blades						
Motor Type			Permanent Split Capacitor						
Coil	Rows	NOS.	4						
	Face Area	SQ. FT	2.26	3.07	3.47	3.47	3.79	4.44	5.73
	Coil Water Volume	M ³	0.0026	0.0034	0.0037	0.0037	0.0040	0.0048	0.0060
	Working Pressure	MPa	1.72						
Connections	In-Out (Thread) / Adapter Material		1" NPT / Brass, Externally Threaded				1 1/4" NPT / Brass, Externally Threaded		
	Condensate Drain / Material		3/4" NPT / GI Steel , Externally Threaded						
Cabinet Size	Height	MM	375 +/- 5						
	Width	MM	650 +/- 5						
	Length	MM	990	1190	1390	1390	1440	1690	1990
Casing Material / Thickness			Galvanized Steel / up to 1.0 MM						
Casing Treatment / External Finish			Non-painted , Z275 (G90) Zinc Coating						
Net Weight		KG	37	46	49	50	53	58	70

Note:
 * Based on motor at high speed, standard air, dry coil and 50Pa ESP operation; 5.6°C water temperature rise; entering air temperature 24.4°C DB; 17.2°C WB; entering water temperature 7.2°C.

Electronically Commutated Motor (ECM) is available for all sizes - Optional.



Controller (Optional)

-- For other design conditions, please apply the selection program to finalize your applications --

TECHNICAL DATA

42MEH SERIES HIGH STATIC WITH PLENUM - STANDARD ΔT

DUCTED-DOUBLE SKIN

PERFORMANCE			MEH-12D	MEH-14D	MEH-16D	MEH-18D	MEH-20D	MEH-24D	MEH-30D	
			HIGH STATIC , NORMAL COOLING UNIT							
Nominal Air Volume	High	CFM	1050	1404	1560	1647	1863	2310	3075	
		L/S	496	663	736	777	879	1090	1451	
Cooling Capacity (Fluid)*		KW	7.14	9.05	10.86	11.58	13.48	15.69	20.32	
		BTU/HR	24362	30879	37054	39511	45994	53534	69332	
AC Motor Nominal Power Output		W	300	200	250	300	500	500	800	
Motor Current		AMP	Refer Page 37							
Sound Pressure	High	dB (A)	53	54	55	56	56	58	58	
	Med		51	53	54	54	54	57	57	
	Low		49	50	51	51	52	52	52	
Water Flow		L/S	0.304	0.385	0.462	0.493	0.574	0.668	0.865	
Water Pressure Drop		KPA	11.4	10.6	11.7	12.9	13	23.8	29.1	
Fan Type			Centrifugal Forward-Curved Blades							
Motor Type			Permanent Split Capacitor							
Coil	Rows	NOS.	4							
	Face Area	SQ. FT	2.26	3.07	3.47	3.47	3.79	4.44	5.73	
	Coil Water Volume	M ³	0.0026	0.0034	0.0037	0.0037	0.0040	0.0048	0.0060	
	Working Pressure	MPa	1.72							
Connections	In-Out (Thread) / Adapter Material		1" NPT / Brass, Externally Threaded				1 1/4" NPT / Brass, Externally Threaded			
	Condensate Drain / Material		3/4" NPT / GI Steel , Externally Threaded							
Cabinet Size	Height	MM	375 +/- 5							
	Width	MM	650 +/- 5							
	Length	MM	870	1120	1245	1245	1345	1545	1920	
Casing Material / Thickness			Galvanized Steel / up to 1.0 MM							
Casing Treatment / External Finish			Non-painted , Z275 (G90) Zinc Coating							
Net Weight		KG	46	58	61	63	66	73	88	

Note:
 * Based on motor at high speed, standard air, dry coil and 50Pa ESP operation; 5.6°C water temperature rise; entering air temperature 24.4°C DB;17.2°C WB; entering water temperature 7.2°C.

Electronically Commutated Motor (ECM) is available for all sizes - Optional.



Controller (Optional)

-- For other design conditions, please apply the selection program to finalize your applications --

TECHNICAL DATA

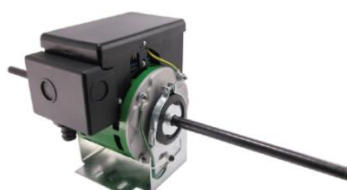
42MEH SERIES WITH CABINET - STANDARD ΔT

EXPOSED DECORATIVE

PERFORMANCE			MEH-12E	MEH-14E	MEH-16E	MEH-18E	MEH-20E	MEH-24E	MEH-30E	
			HIGH STATIC , NORMAL COOLING UNIT							
Nominal Air Volume	High	CFM	1083	1432	1591	1681	1893	2356	3234	
		L/S	511	676	751	793	893	1112	1526	
Cooling Capacity (Fluid)*		KW	7.36	9.25	11.07	11.81	13.71	15.95	21.01	
		BTU/HR	25112	31561	37771	40296	46779	54421	71686	
AC Motor Nominal Power Output		W	300	200	250	300	500	500	800	
Motor Current		AMP	Refer Page 37							
Sound Pressure	High	dB (A)	53	54	55	56	56	58	58	
	Med		51	53	54	54	54	57	57	
	Low		49	50	51	51	52	52	52	
Water Flow		L/S	0.313	0.394	0.471	0.503	0.584	0.679	0.894	
Water Pressure Drop		KPA	12.1	11.1	12.2	13.4	13.5	24.6	31	
Fan Type			Centrifugal Forward-Curved Blades							
Motor Type			Permanent Split Capacitor							
Coil	Rows	NOS.	4							
	Face Area	SQ. FT	2.26	3.07	3.47	3.47	3.79	4.44	5.73	
	Coil Water Volume	M ³	0.0026	0.0034	0.0037	0.0037	0.0040	0.0048	0.0060	
	Working Pressure	MPa	1.72							
Connections	In-Out (Thread) / Adapter Material		1" NPT / Brass, Externally Threaded				1 1/4" NPT / Brass, Externally Threaded			
	Condensate Drain / Material		3/4" NPT / GI Steel , Externally Threaded							
Cabinet Size	Height	MM	375 +/- 5							
	Width	MM	630 +/- 5							
	Length	MM	870	1120	1245	1245	1345	1545	1920	
Casing Material / Thickness			Galvanized Steel / up to 1.0 MM							
Casing Treatment / External Finish			Polyester powder coated / RAL9002							
Net Weight		KG	37	46	49	50	53	58	70	

Note:
 * Based on motor at high speed, standard air, dry coil and 35Pa ESP operation; 5.6°C water temperature rise; entering air temperature 24.4°C DB; 17.2°C WB; entering water temperature 7.2°C.

Electronically Commutated Motor (ECM) is available for all sizes - Optional.



Controller (Optional)

-- For other design conditions, please apply the selection program to finalize your applications --

TECHNICAL DATA

42MEHD SERIES HIGH STATIC WITH PLENUM – DISTRICT COOLING HIGH ΔT

DUCTED

PERFORMANCE			MEHD12S	MEHD14S	MEHD16S	MEHD18S	MEHD20S	MEHD24S	MEHD30S	
			HIGH STATIC , DISTRICT COOLING UNIT							
Nominal Air Volume	High	CFM	1050	1404	1560	1647	1863	2310	3075	
		L/S	496	663	736	777	879	1090	1451	
Cooling Capacity (Fluid)*		KW	8.26	11.47	13.51	14.08	14.39	20.8	24.43	
		BTU/HR	28183	39136	46096	48041	49099	70970	83355	
AC Motor Nominal Power Output		W	300	200	250	300	500	500	800	
Motor Current		AMP	Refer Page 38							
Sound Pressure	High	dB (A)	53	54	55	56	56	58	58	
	Med		51	53	54	54	54	57	57	
	Low		49	50	51	51	52	52	52	
Water Flow		L/S	0.221	0.307	0.362	0.377	0.385	0.557	0.654	
Water Pressure Drop		KPA	13.2	29.8	24.8	26.6	23.6	28	51	
Fan Type			Centrifugal Forward-Curved Blades							
Motor Type			Permanent Split Capacitor							
Coil	Rows	NOS.	4							
	Face Area	SQ. FT	2.26	3.07	3.47	3.47	3.79	4.44	5.73	
	Coil Water Volume	M³	0.0026	0.0034	0.0037	0.0037	0.0040	0.0048	0.0060	
	Working Pressure	MPa	1.72							
Connections	In-Out (Thread) / Adapter Material		1" NPT / Brass, Externally Threaded				1 1/4" NPT / Brass, Externally Threaded			
	Condensate Drain / Material		3/4" NPT / GI Steel , Externally Threaded							
Cabinet Size	Height	MM	375 +/- 5							
	Width	MM	650 +/- 5							
	Length	MM	990	1190	1390	1390	1440	1690	1990	
Casing Material / Thickness			Galvanized Steel / up to 1.0 MM							
Casing Treatment / External Finish			Non-painted , Z275 (G90) Zinc Coating							
Net Weight		KG	37	46	49	50	53	58	70	

Note:
 * Based on motor at high speed, standard air, dry coil and 50Pa ESP operation; 8.9°C water temperature rise; entering air temperature 24.4°C DB; 17.2°C WB; entering water temperature 5.5°C.

Electronically Commutated Motor (ECM) is available for all sizes - Optional.



Controller (Optional)

- - For other design conditions, please apply the selection program to finalize your applications - -

TECHNICAL DATA

42MEHD SERIES HIGH STATIC WITH PLENUM – DISTRICT COOLING HIGH ΔT

DUCTED-DOUBLE SKIN

PERFORMANCE			MEHD12D	MEHD14D	MEHD16D	MEHD18D	MEHD20D	MEHD24D	MEHD30D	
			HIGH STATIC , DISTRICT COOLING UNIT							
Nominal Air Volume	High	CFM	1050	1404	1560	1647	1863	2310	3075	
		L/S	496	663	736	777	879	1090	1451	
Cooling Capacity (Fluid)*		KW	8.26	11.47	13.51	14.08	14.39	20.8	24.43	
		BTU/HR	28183	39136	46096	48041	49099	70970	83355	
AC Motor Nominal Power Output		W	300	200	250	300	500	500	800	
Motor Current		AMP	Refer Page 38							
Sound Pressure	High	dB (A)	53	54	55	56	56	58	58	
	Med		51	53	54	54	54	57	57	
	Low		49	50	51	51	52	52	52	
Water Flow		L/S	0.221	0.307	0.362	0.377	0.385	0.557	0.654	
Water Pressure Drop		KPA	13.2	29.8	24.8	26.6	23.6	28	51	
Fan Type		Centrifugal Forward-Curved Blades								
Motor Type		Permanent Split Capacitor								
Coil	Rows	NOS.	4							
	Face Area	SQ. FT	2.26	3.07	3.47	3.47	3.79	4.44	5.73	
	Coil Water Volume	M ³	0.0026	0.0034	0.0037	0.0037	0.0040	0.0048	0.0060	
	Working Pressure	MPa	1.72							
Connections	In-Out (Thread) / Adapter Material		1" NPT / Brass, Externally Threaded				1 1/4" NPT / Brass, Externally Threaded			
	Condensate Drain / Material		3/4" NPT / GI Steel , Externally Threaded							
Cabinet Size	Height	MM	375 +/- 5							
	Width	MM	650 +/- 5							
	Length	MM	870	1120	1245	1245	1345	1545	1920	
Casing Material / Thickness		Galvanized Steel / up to 1.0 MM								
Casing Treatment / External Finish		Non-painted , Z275 (G90) Zinc Coating								
Net Weight		KG	46	58	61	63	66	73	88	

Note:
 * Based on motor at high speed, standard air, dry coil and 50Pa ESP operation; 8.9°C water temperature rise; entering air temperature 24.4°C DB;17.2°C WB; entering water temperature 5.5°C.

Electronically Commutated Motor (ECM) is available for all sizes - Optional.



Controller (Optional)

- - For other design conditions, please apply the selection program to finalize your applications - -

TECHNICAL DATA

42MEHD SERIES WITH CABINET – DISTRICT COOLING HIGH AT

EXPOSED DECORATIVE

PERFORMANCE			MEHD12E	MEHD14E	MEHD16E	MEHD18E	MEHD20E	MEHD24E	MEHD30E	
			HIGH STATIC , DISTRICT COOLING UNIT							
Nominal Air Volume	High	CFM	1083	1432	1591	1681	1893	2356	3234	
		L/S	511	676	751	793	893	1112	1526	
Cooling Capacity (Fluid)*		KW	8.55	11.66	13.75	14.33	14.62	21.36	25.48	
		BTU/HR	29173	39784	46915	48894	49883	72880	86938	
AC Motor Nominal Power Output		W	300	200	250	300	500	500	800	
Motor Current		AMP	Refer Page 38							
Sound Pressure	High	dB (A)	53	54	55	56	56	58	58	
	Med		51	53	54	54	54	57	57	
	Low		49	50	51	51	52	52	52	
Water Flow		L/S	0.229	0.312	0.368	0.384	0.392	0.572	0.682	
Water Pressure Drop		KPA	14.1	30.7	25.7	27.5	24.3	29.4	55.2	
Fan Type			Centrifugal Forward-Curved Blades							
Motor Type			Permanent Split Capacitor							
Coil	Rows	NOS.	4							
	Face Area	SQ. FT	2.26	3.07	3.47	3.47	3.79	4.44	5.73	
	Coil Water Volume	M ³	0.0026	0.0034	0.0037	0.0037	0.0040	0.0048	0.0060	
	Working Pressure	MPa	1.72							
Connections	In-Out (Thread) / Adapter Material		1" NPT / Brass, Externally Threaded				1 1/4" NPT / Brass, Externally Threaded			
	Condensate Drain / Material		3/4" NPT / GI Steel , Externally Threaded							
Cabinet Size	Height	MM	375 +/- 5							
	Width	MM	630 +/- 5							
	Length	MM	870	1120	1245	1245	1345	1545	1920	
Casing Material / Thickness			Galvanized Steel / up to 1.0 MM							
Casing Treatment / External Finish			Polyester powder coated / RAL9002							
Net Weight		KG	37	46	49	50	53	58	70	

Note:
 * Based on motor at high speed, standard air, dry coil and 35Pa ESP operation; 8.9°C water temperature rise; entering air temperature 24.4°C DB; 17.2°C WB; entering water temperature 5.5°C.

Electronically Commutated Motor (ECM) is available for all sizes - Optional.

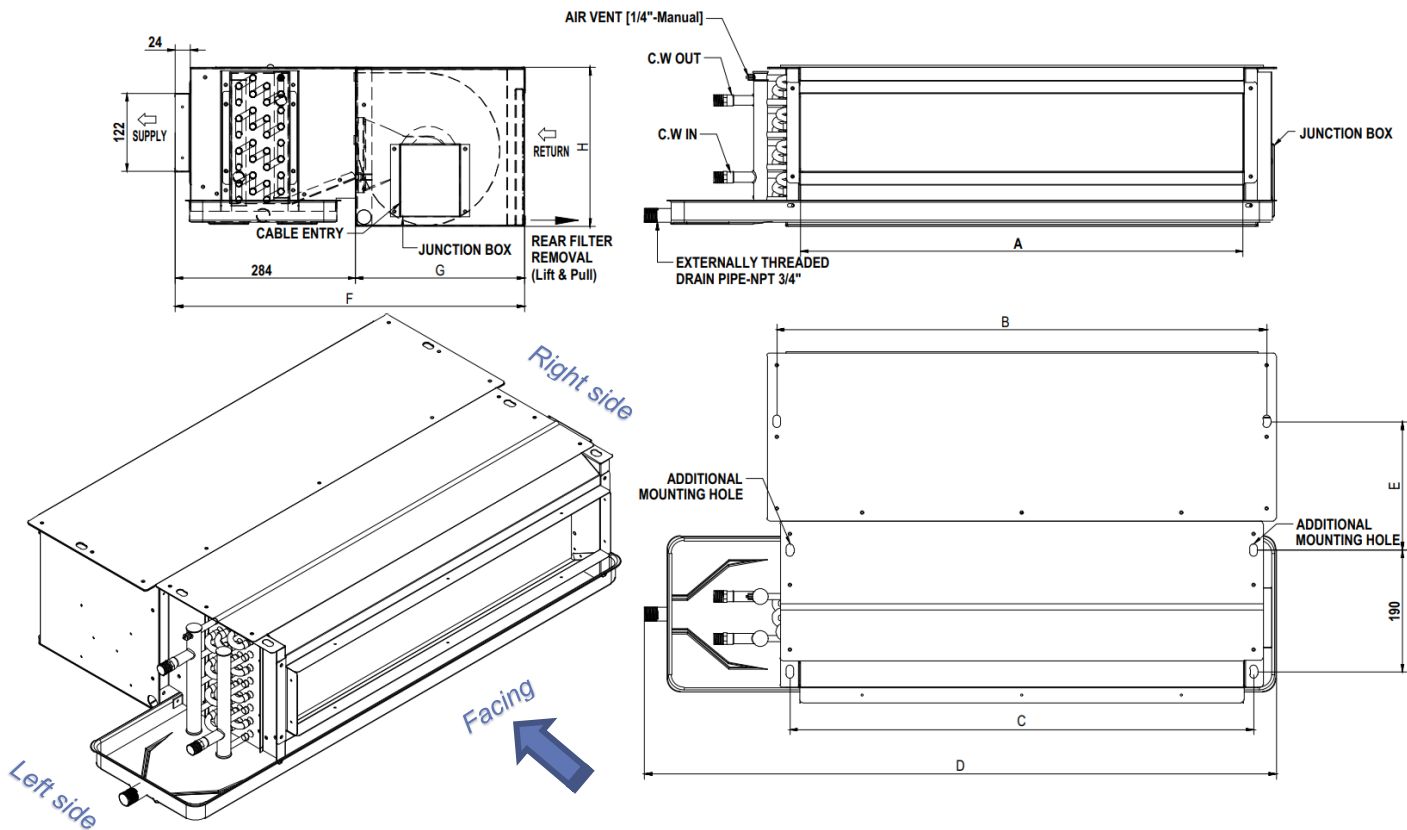


Controller (Optional)

-- For other design conditions, please apply the selection program to finalize your applications --

UNIT DIMENSIONS & WEIGHT

42MEL SERIES LOW STATIC DUCTED FCU WITH PLENUM



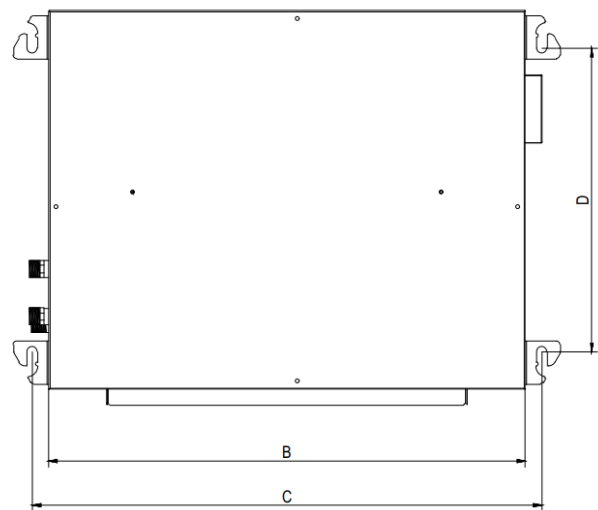
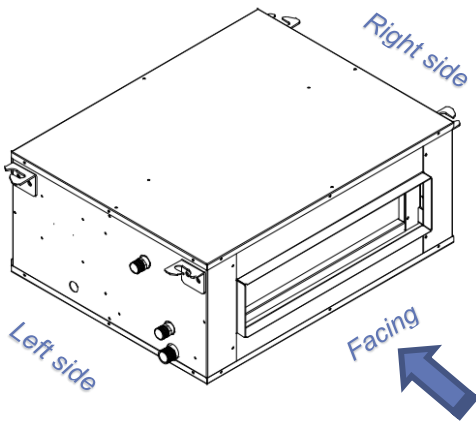
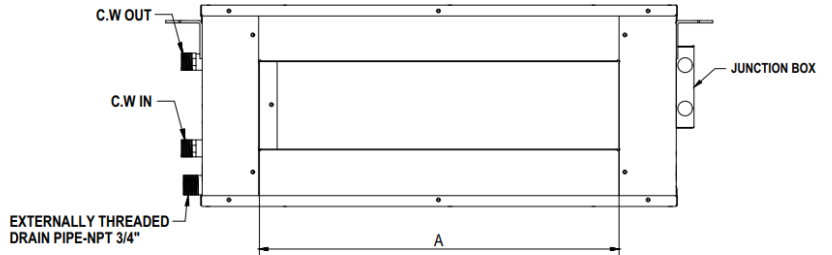
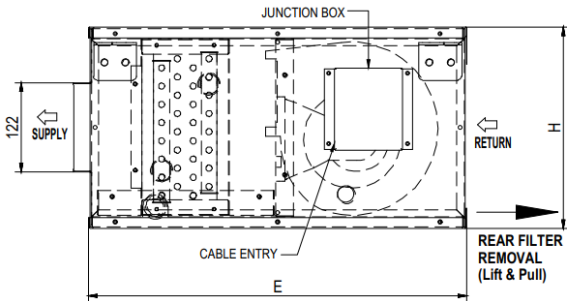
No.	Unit Model	A	B	C	D	E	F	G	H	C.W IN/OUT	NET WEIGHT
1	MEL-02S	400	468	426	690	200	550	266	260	1/2" NPT	16 KG
2	MEL-03S	500	568	526	790	200	550	266	260	1/2" NPT	18 KG
3	MEL-04S	600	668	626	890	200	550	266	260	1/2" NPT	20 KG
4	MEL-05S	700	768	726	990	230	600	316	300	1/2" NPT	23 KG
5	MEL-06S	700	768	726	990	230	600	316	300	1/2" NPT	24 KG
6	MEL-07S	900	968	926	1190	230	600	316	300	3/4" NPT	28 KG
7	MEL-08S	900	968	926	1190	230	600	316	300	3/4" NPT	28 KG
8	MEL-09S	900	968	926	1190	230	600	316	300	3/4" NPT	28 KG
9	MEL-10S	1175	1243	1201	1440	230	600	316	300	3/4" NPT	36 KG

Note:

1. Dimensions are in mm.
2. Above shown with left hand coil connection.
3. Wiring connection is located at the opposite side of coil and drain connections.

UNIT DIMENSIONS & WEIGHT

42MEL SERIES LOW STATIC DOUBLE SKIN DUCTED FCU WITH PLENUM



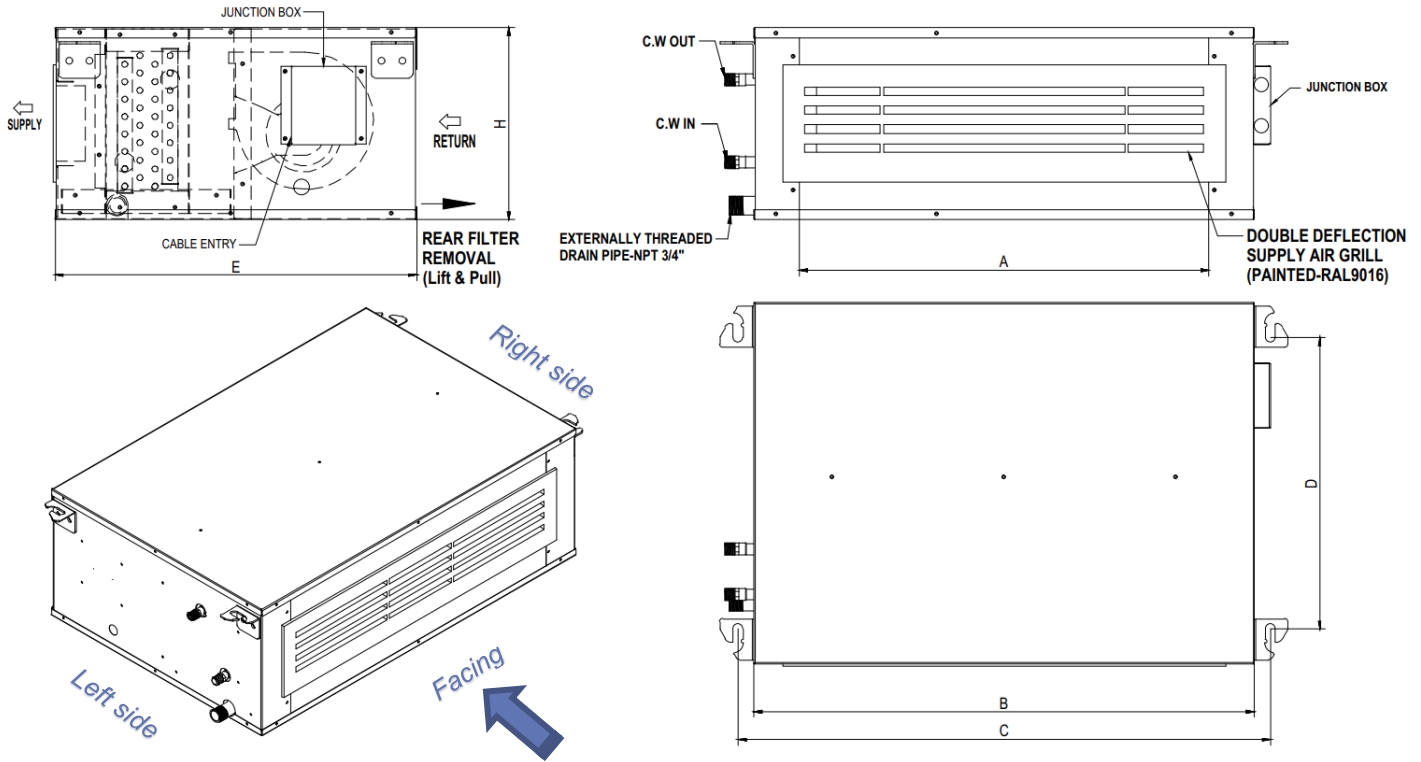
No.	Unit Model	A	B	C	D	E	H	C.W IN/OUT	NET WEIGHT
1	MEL-02D	400	565	610	425	550	280	1/2" NPT	20 KG
2	MEL-03D	500	665	710	425	550	280	1/2" NPT	23 KG
3	MEL-04D	600	765	810	425	550	280	1/2" NPT	25 KG
4	MEL-05D	700	865	910	475	600	300	1/2" NPT	29 KG
5	MEL-06D	700	865	910	475	600	300	1/2" NPT	30 KG
6	MEL-07D	900	1065	1110	475	600	300	3/4" NPT	35 KG
7	MEL-08D	900	1065	1110	475	600	300	3/4" NPT	35 KG
8	MEL-09D	900	1065	1110	475	600	300	3/4" NPT	35 KG
9	MEL-10D	1175	1340	1385	475	600	300	3/4" NPT	45 KG

Note:

1. Dimensions are in mm.
2. Above shown with left hand coil connection.
3. Wiring connection is located at the opposite side of coil and drain connections.

UNIT DIMENSIONS & WEIGHT

42MEL SERIES EXPOSED DECORATIVE FCU WITH CABINET



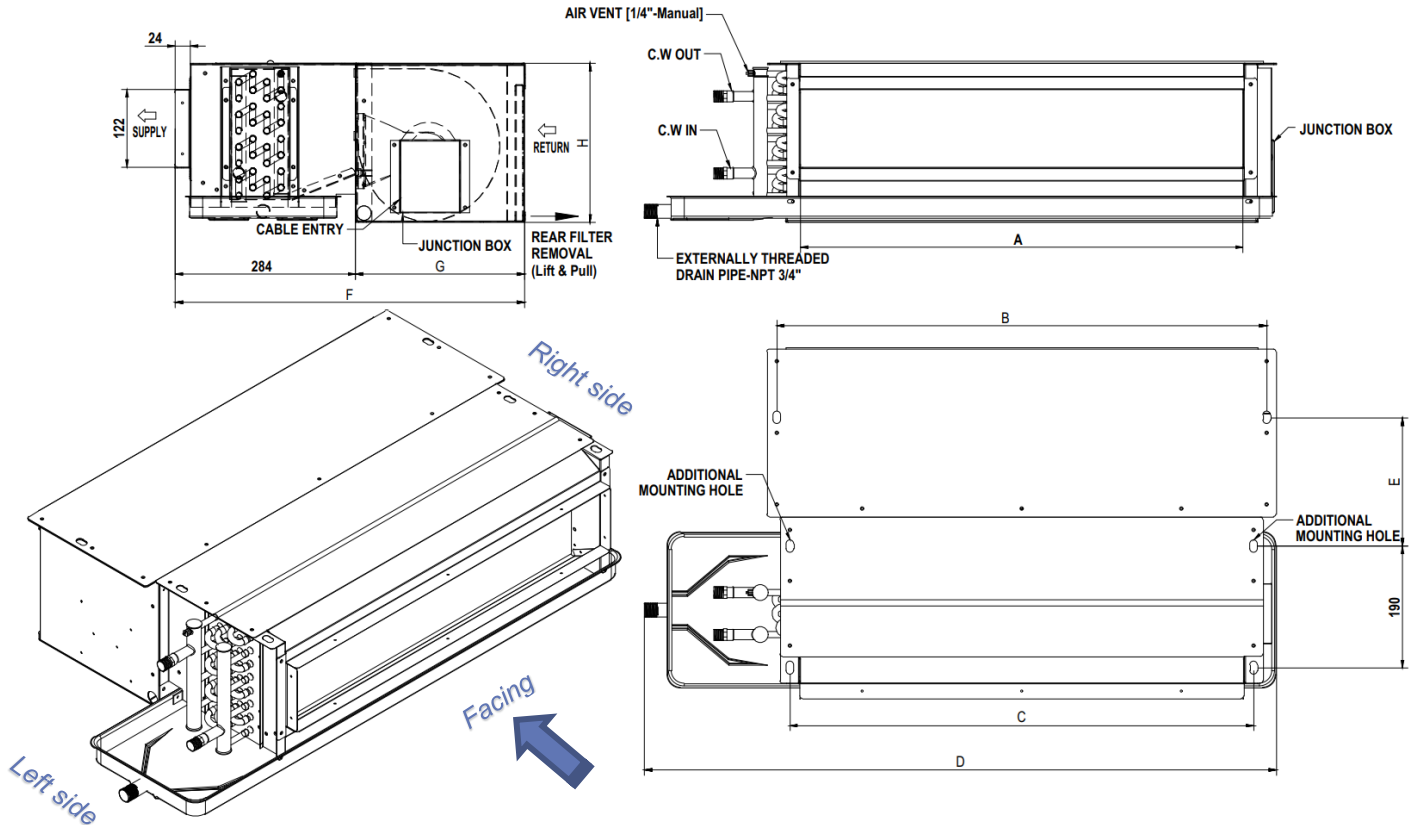
No.	Unit Model	A	B	C	D	E	H	C.W IN/OUT	NET WEIGHT
1	MEL-02E	400	565	610	425	530	280	1/2" NPT	16 KG
2	MEL-03E	500	665	710	425	530	280	1/2" NPT	18 KG
3	MEL-04E	600	765	810	425	530	280	1/2" NPT	20 KG
4	MEL-05E	700	865	910	475	580	300	1/2" NPT	23 KG
5	MEL-06E	700	865	910	475	580	300	1/2" NPT	24 KG
6	MEL-07E	900	1065	1110	475	580	300	3/4" NPT	28 KG
7	MEL-08E	900	1065	1110	475	580	300	3/4" NPT	28 KG
8	MEL-09E	900	1065	1110	475	580	300	3/4" NPT	28 KG
9	MEL-10E	1175	1340	1385	475	580	300	3/4" NPT	36 KG

Note:

1. Dimensions are in mm.
2. Above shown with left hand coil connection.
3. Wiring connection is located at the opposite side of coil and drain connections.

UNIT DIMENSIONS & WEIGHT

42MELD SERIES LOW STATIC DUCTED FCU WITH PLENUM



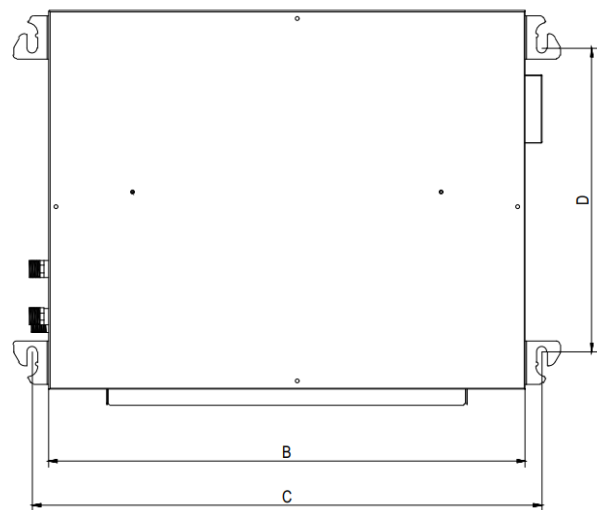
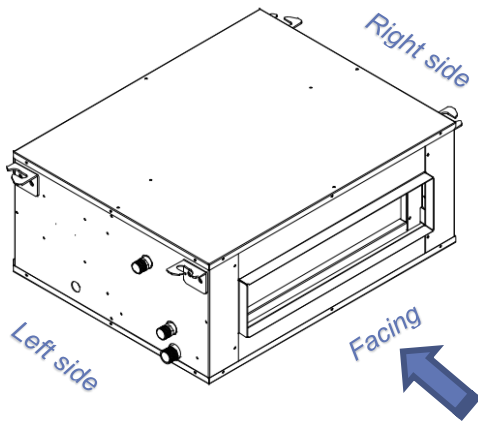
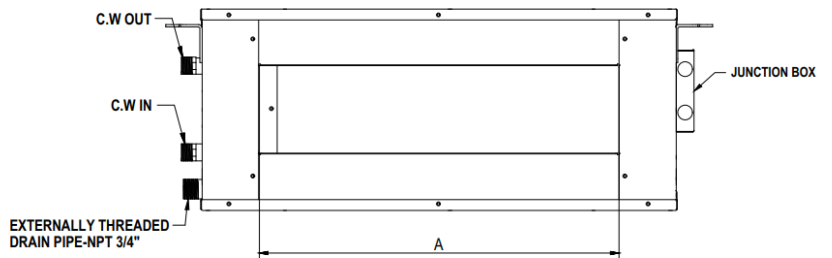
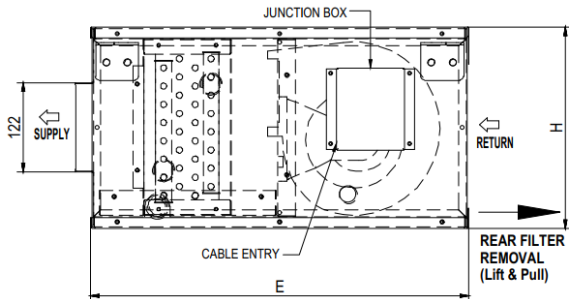
No.	Unit Model	A	B	C	D	E	F	G	H	C.W IN/OUT	NET WEIGHT
1	MELD02S	400	468	426	690	200	550	266	260	1/2" NPT	16 KG
2	MELD03S	500	568	526	790	200	550	266	260	1/2" NPT	18 KG
3	MELD04S	600	668	626	890	200	550	266	260	1/2" NPT	20 KG
4	MELD05S	700	768	726	990	230	600	316	300	1/2" NPT	23 KG
5	MELD06S	700	768	726	990	230	600	316	300	1/2" NPT	24 KG
6	MELD07S	900	968	926	1190	230	600	316	300	3/4" NPT	28 KG
7	MELD08S	900	968	926	1190	230	600	316	300	3/4" NPT	28 KG
8	MELD09S	900	968	926	1190	230	600	316	300	3/4" NPT	28 KG
9	MELD10S	1175	1243	1201	1440	230	600	316	300	3/4" NPT	36 KG

Note:

1. Dimensions are in mm.
2. Above shown with left hand coil connection.
3. Wiring connection is located at the opposite side of coil and drain connections.

UNIT DIMENSIONS & WEIGHT

42MELD SERIES LOW STATIC DOUBLE SKIN DUCTED FCU WITH PLENUM



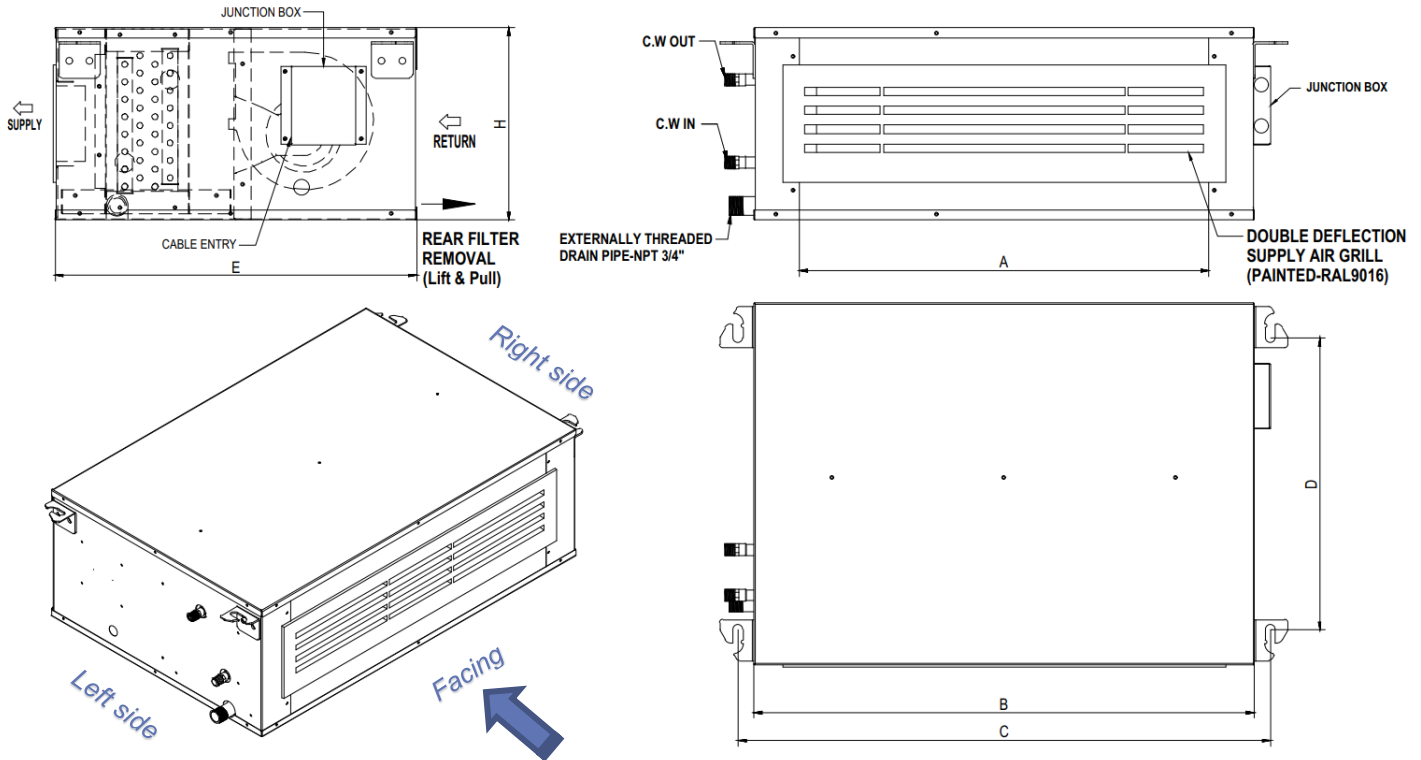
No.	Unit Model	A	B	C	D	E	H	C.W IN/OUT	NET WEIGHT
1	MELD02D	400	565	610	425	550	280	1/2" NPT	20 KG
2	MELD03D	500	665	710	425	550	280	1/2" NPT	23 KG
3	MELD04D	600	765	810	425	550	280	1/2" NPT	25 KG
4	MELD05D	700	865	910	475	600	300	1/2" NPT	29 KG
5	MELD06D	700	865	910	475	600	300	1/2" NPT	30 KG
6	MELD07D	900	1065	1110	475	600	300	3/4" NPT	35 KG
7	MELD08D	900	1065	1110	475	600	300	3/4" NPT	35 KG
8	MELD09D	900	1065	1110	475	600	300	3/4" NPT	35 KG
9	MELD10D	1175	1340	1385	475	600	300	3/4" NPT	45 KG

Note:

1. Dimensions are in mm.
2. Above shown with left hand coil connection.
3. Wiring connection is located at the opposite side of coil and drain connections.

UNIT DIMENSIONS & WEIGHT

42MELD SERIES EXPOSED DECORATIVE FCU WITH CABINET



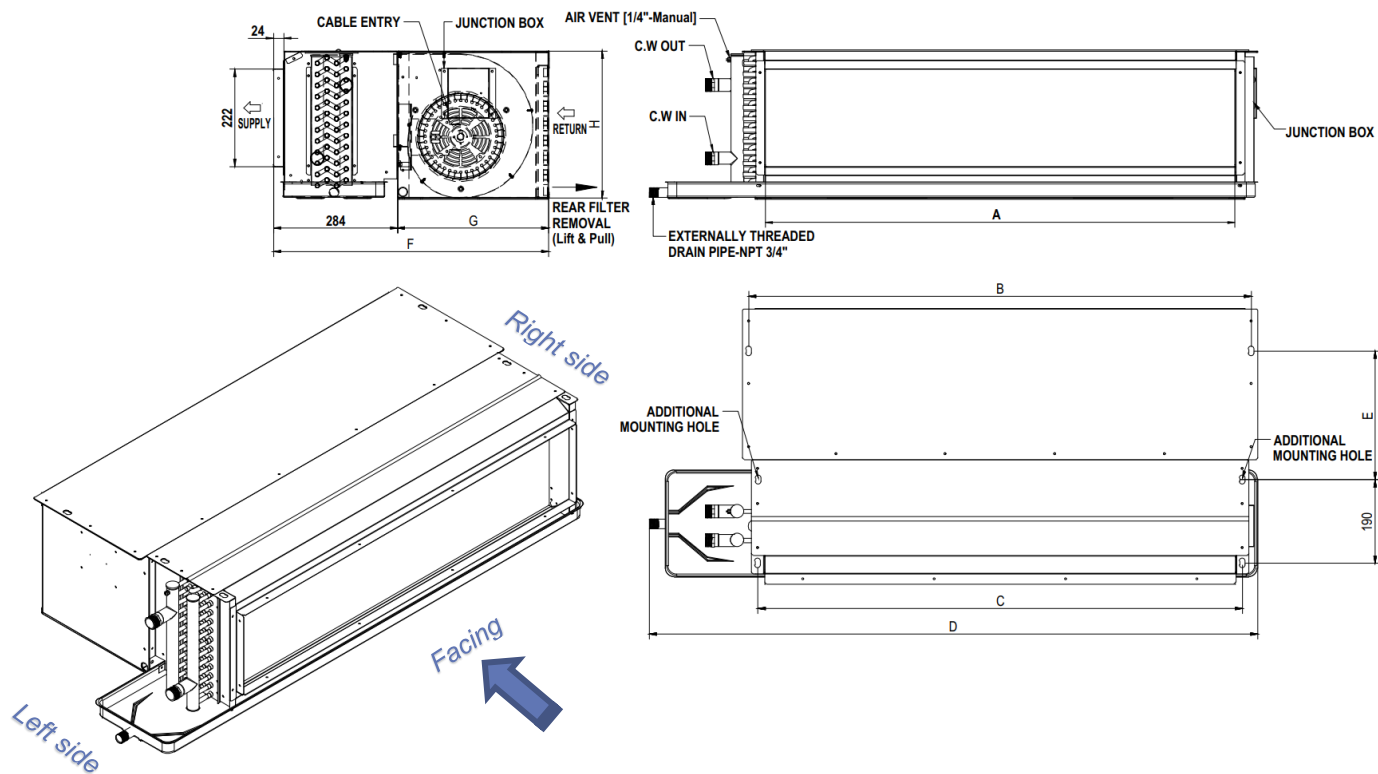
No.	Unit Model	A	B	C	D	E	H	C.W IN/OUT	NET WEIGHT
1	MELD02E	400	565	610	425	530	280	1/2" NPT	16 KG
2	MELD03E	500	665	710	425	530	280	1/2" NPT	18 KG
3	MELD04E	600	765	810	425	530	280	1/2" NPT	20 KG
4	MELD05E	700	865	910	475	580	300	1/2" NPT	23 KG
5	MELD06E	700	865	910	475	580	300	1/2" NPT	24 KG
6	MELD07E	900	1065	1110	475	580	300	3/4" NPT	28 KG
7	MELD08E	900	1065	1110	475	580	300	3/4" NPT	28 KG
8	MELD09E	900	1065	1110	475	580	300	3/4" NPT	28 KG
9	MELD10E	1175	1340	1385	475	580	300	3/4" NPT	36 KG

Note:

1. Dimensions are in mm.
2. Above shown with left hand coil connection.
3. Wiring connection is located at the opposite side of coil and drain connections.

UNIT DIMENSIONS & WEIGHT

42MEH SERIES HIGH STATIC DUCTED FCU WITH PLENUM



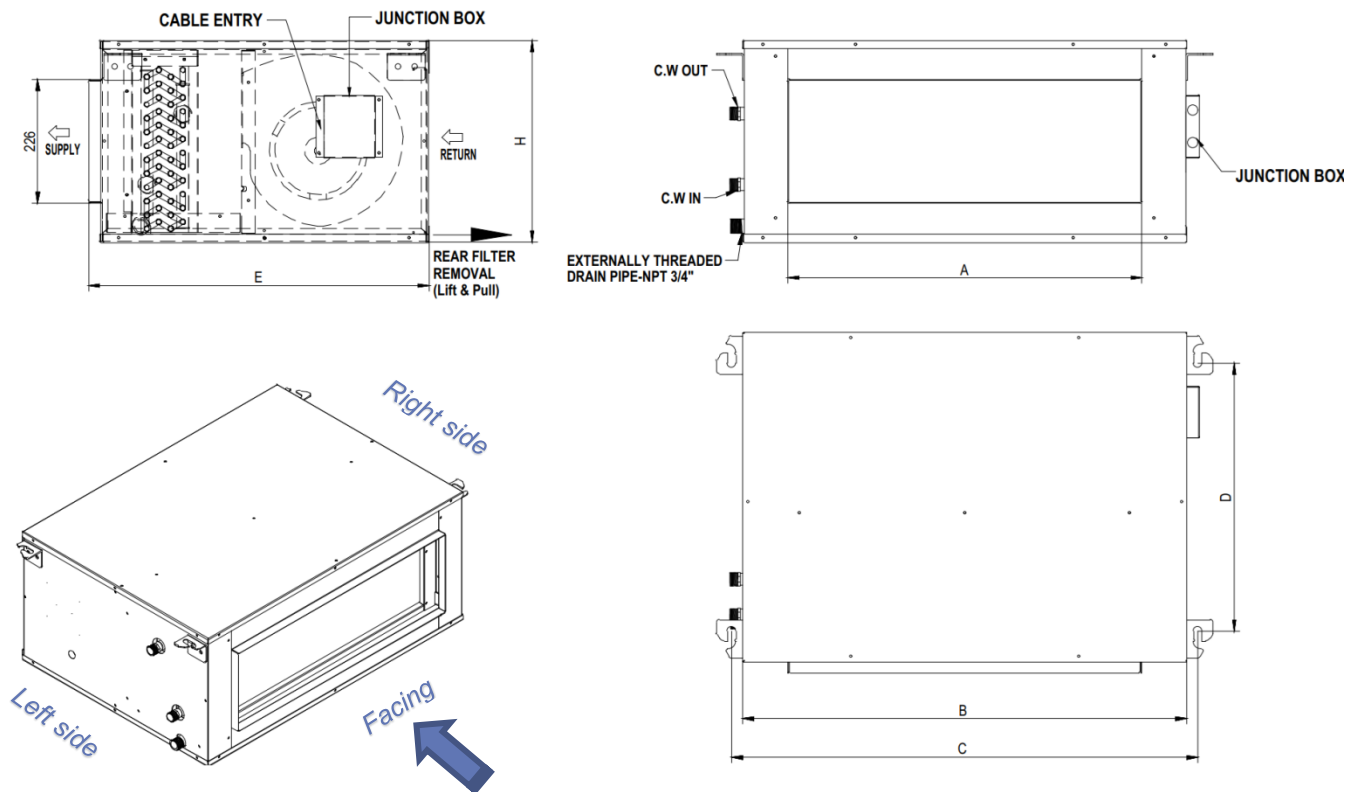
No.	Unit Model	A	B	C	D	E	F	G	H	C.W IN/OUT	NET WEIGHT
1	MEH-12	700	768	727	990	300	650	366	375	1" NPT	37 KG
2	MEH-14	950	1018	977	1190	300	650	366	375	1" NPT	46 KG
3	MEH-16	1075	1143	1102	1390	300	650	366	375	1" NPT	49 KG
4	MEH-18	1075	1143	1102	1390	300	650	366	375	1" NPT	50 KG
5	MEH-20	1175	1243	1202	1440	300	650	366	375	1 1/4" NPT	53 KG
6	MEH-24	1375	1443	1402	1690	300	650	366	375	1 1/4" NPT	58 KG
7	MEH-30	1750	1818	1777	1990	300	650	366	375	1 1/4" NPT	70 KG

Note:

1. Dimensions are in mm.
2. Above shown with left hand coil connection.
3. Wiring connection is located at the opposite side of coil and drain connections.

UNIT DIMENSIONS & WEIGHT

42MEH SERIES HIGH STATIC DOUBLE SKIN DUCTED FCU WITH PLENUM



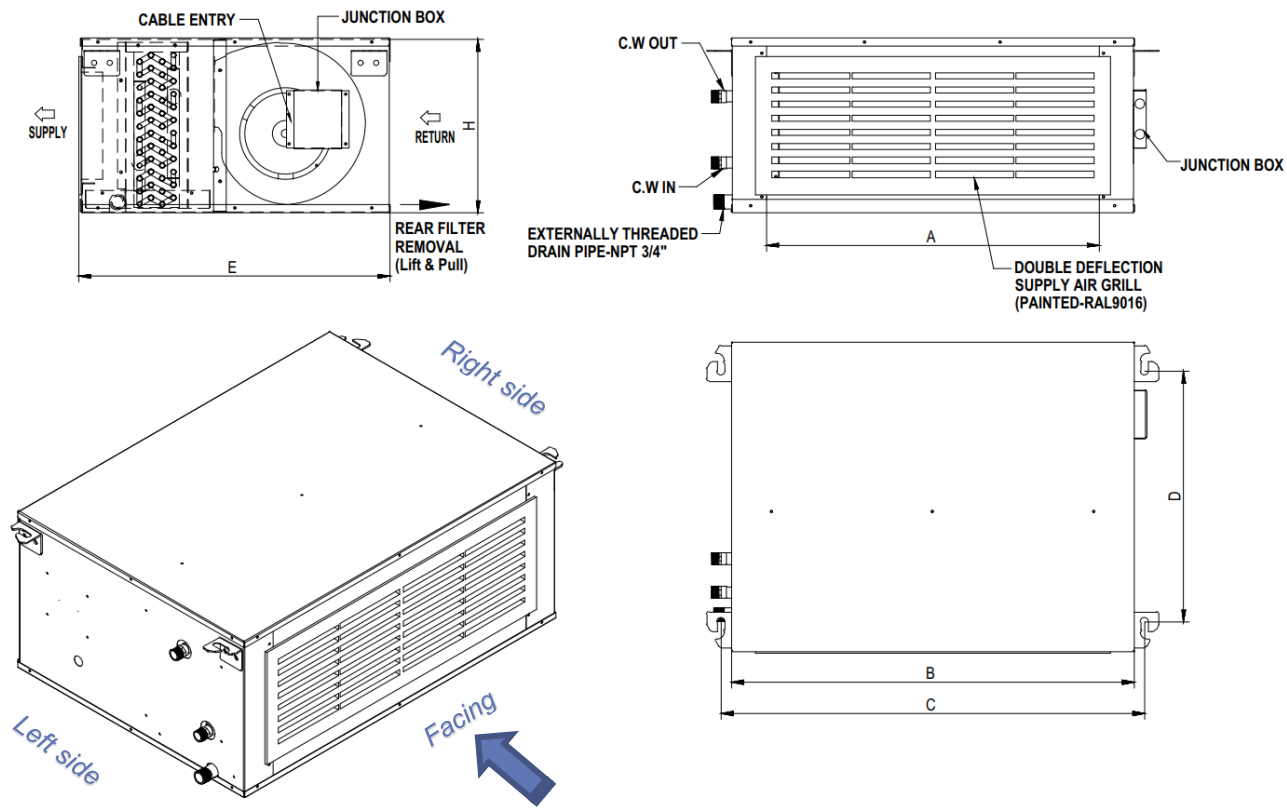
No.	Unit Model	A	B	C	D	E	H	C.W IN/OUT	NET WEIGHT
1	MEH-12D	700	870	910	525	650	375	1" NPT	46 KG
2	MEH-14D	950	1120	1160	525	650	375	1" NPT	58 KG
3	MEH-16D	1075	1245	1285	525	650	375	1" NPT	61 KG
4	MEH-18D	1075	1245	1285	525	650	375	1" NPT	63 KG
5	MEH-20D	1175	1345	1385	525	650	375	1 1/4" NPT	66 KG
6	MEH-24D	1375	1545	1585	525	650	375	1 1/4" NPT	73 KG
7	MEH-30D	1750	1920	1960	525	650	375	1 1/4" NPT	88 KG

Note:

1. Dimensions are in mm.
2. Above shown with left hand coil connection.
3. Wiring connection is located at the opposite side of coil and drain connections.

UNIT DIMENSIONS & WEIGHT

42MEH SERIES EXPOSED DECORATIVE FCU WITH CABINET



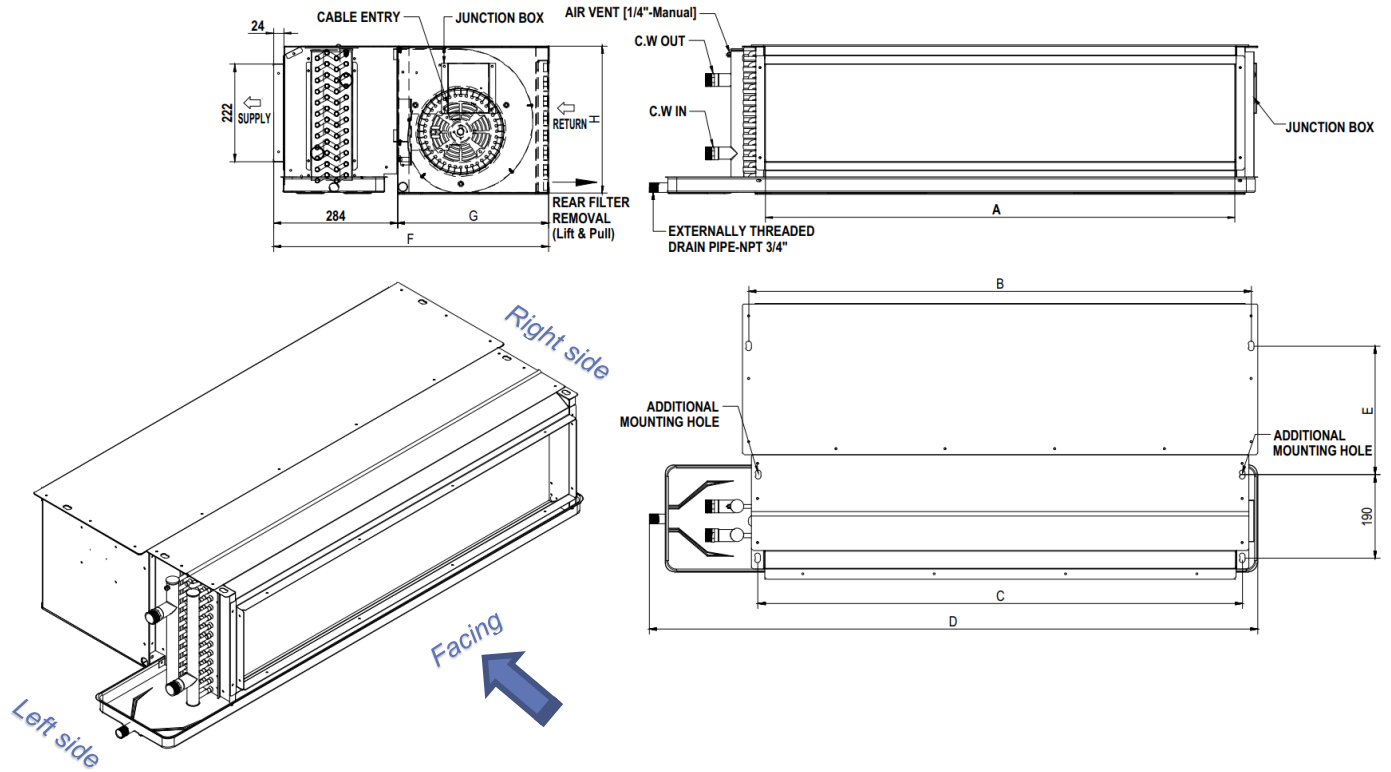
No.	Unit Model	A	B	C	D	E	H	C.W IN/OUT	NET WEIGHT
1	MEH-12E	700	870	910	525	630	375	1" NPT	37 KG
2	MEH-14E	950	1120	1160	525	630	375	1" NPT	46 KG
3	MEH-16E	1075	1245	1285	525	630	375	1" NPT	49 KG
4	MEH-18E	1075	1245	1285	525	630	375	1" NPT	50 KG
5	MEH-20E	1175	1345	1385	525	630	375	1 1/4" NPT	53 KG
6	MEH-24E	1375	1545	1585	525	630	375	1 1/4" NPT	58 KG
7	MEH-30E	1750	1920	1960	525	630	375	1 1/4" NPT	70 KG

Note:

1. Dimensions are in mm.
2. Above shown with left hand coil connection.
3. Wiring connection is located at the opposite side of coil and drain connections.

UNIT DIMENSIONS & WEIGHT

42MEHD SERIES HIGH STATIC DUCTED FCU WITH PLENUM



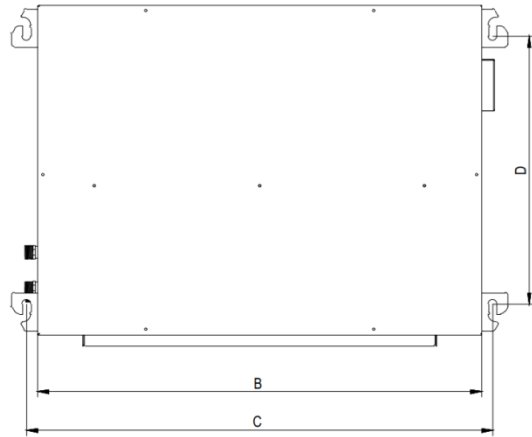
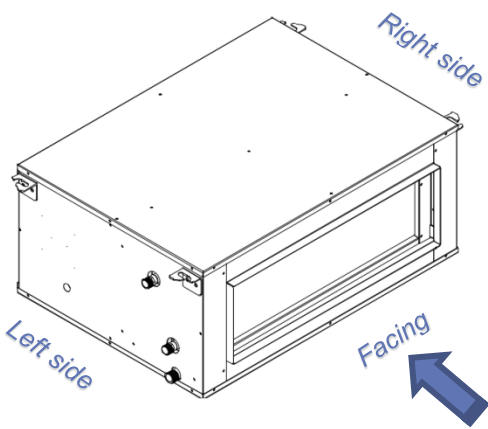
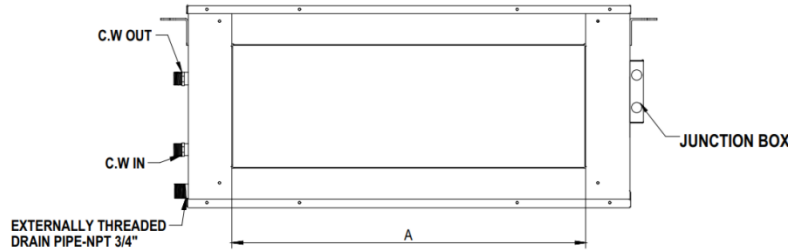
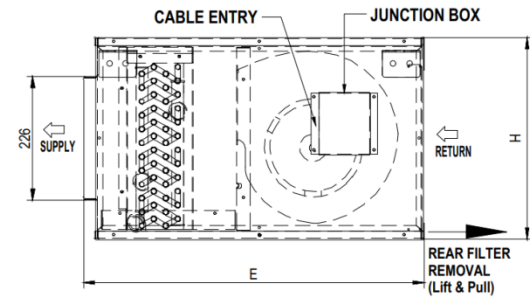
No.	Unit Model	A	B	C	D	E	F	G	H	C.W IN/OUT	NET WEIGHT
1	MEHD12	700	768	727	990	300	650	366	375	1" NPT	37 KG
2	MEHD14	950	1018	977	1190	300	650	366	375	1" NPT	46 KG
3	MEHD16	1075	1143	1102	1390	300	650	366	375	1" NPT	49 KG
4	MEHD18	1075	1143	1102	1390	300	650	366	375	1" NPT	50 KG
5	MEHD20	1175	1243	1202	1440	300	650	366	375	1 1/4" NPT	53 KG
6	MEHD24	1375	1443	1402	1690	300	650	366	375	1 1/4" NPT	58 KG
7	MEHD30	1750	1818	1777	1990	300	650	366	375	1 1/4" NPT	70 KG

Note:

1. Dimensions are in mm.
2. Above shown with left hand coil connection.
3. Wiring connection is located at the opposite side of coil and drain connections.

UNIT DIMENSIONS & WEIGHT

42MEHD SERIES HIGH STATIC DOUBLE SKIN DUCTED FCU WITH PLENUM



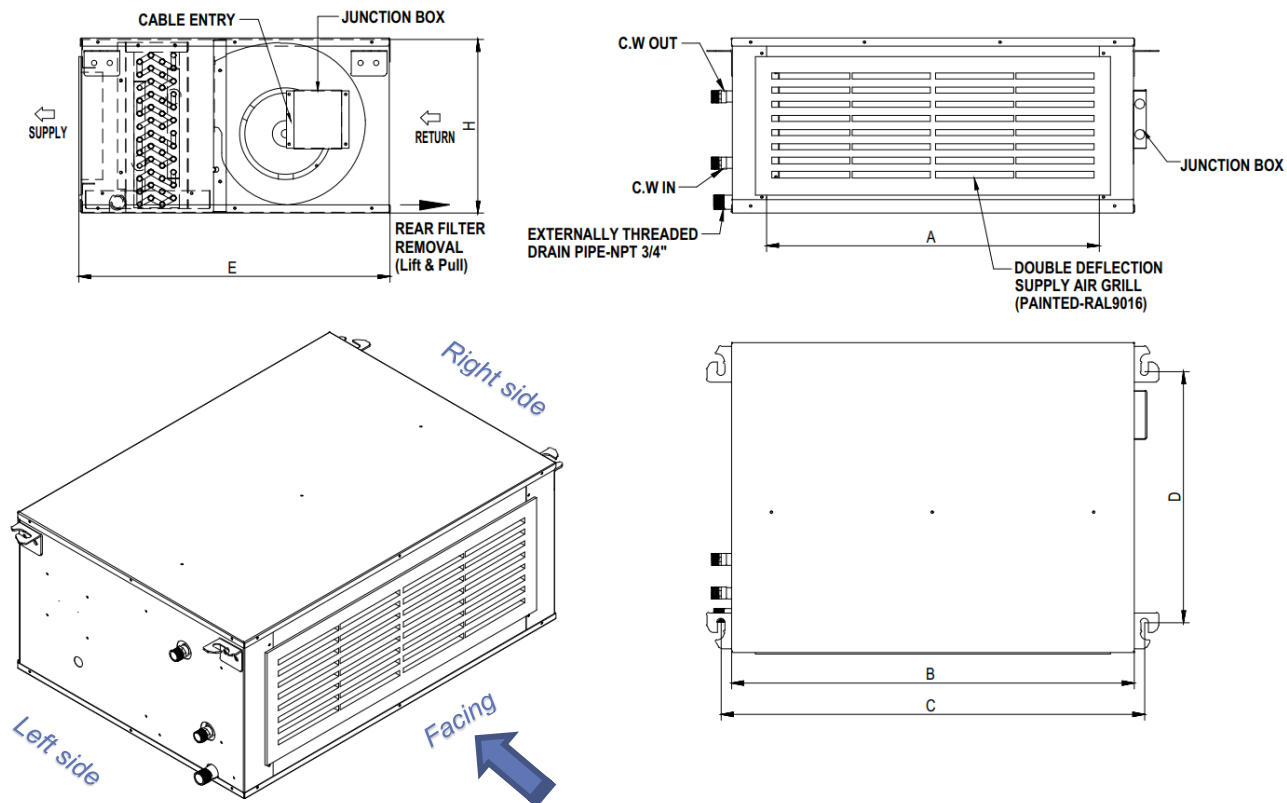
No.	Unit Model	A	B	C	D	E	H	C.W IN/OUT	NET WEIGHT
1	MEHD12D	700	870	910	525	650	375	1" NPT	46 KG
2	MEHD14D	950	1120	1160	525	650	375	1" NPT	58 KG
3	MEHD16D	1075	1245	1285	525	650	375	1" NPT	61 KG
4	MEHD18D	1075	1245	1285	525	650	375	1" NPT	63 KG
5	MEHD20D	1175	1345	1385	525	650	375	1 1/4" NPT	66 KG
6	MEHD24D	1375	1545	1585	525	650	375	1 1/4" NPT	73 KG
7	MEHD30D	1750	1920	1960	525	650	375	1 1/4" NPT	88 KG

Note:

1. Dimensions are in mm.
2. Above shown with left hand coil connection.
3. Wiring connection is located at the opposite side of coil and drain connections.

UNIT DIMENSIONS & WEIGHT

42MEHD SERIES EXPOSED DECORATIVE FCU WITH CABINET



No.	Unit Model	A	B	C	D	E	H	C.W IN/OUT	NET WEIGHT
1	MEHD12E	700	870	910	525	630	375	1" NPT	37 KG
2	MEHD14E	950	1120	1160	525	630	375	1" NPT	46 KG
3	MEHD16E	1075	1245	1285	525	630	375	1" NPT	49 KG
4	MEHD18E	1075	1245	1285	525	630	375	1" NPT	50 KG
5	MEHD20E	1175	1345	1385	525	630	375	1 1/4" NPT	53 KG
6	MEHD24E	1375	1545	1585	525	630	375	1 1/4" NPT	58 KG
7	MEHD30E	1750	1920	1960	525	630	375	1 1/4" NPT	70 KG

Note:

1. Dimensions are in mm.
2. Above shown with left hand coil connection.
3. Wiring connection is located at the opposite side of coil and drain connections.



PERFORMANCE RATING

42MEL SERIES LOW STATIC DUCTED FCU WITH PLENUM

Model MEL-	Speed	ESP (Pa)	Air Flow (L/S)	Capacity (KW)		Air Off FCU (°C)		Water Flow (L/S)	Water Pressure Drop (kPa)
				Total	Sensible	DB	WB		
02S	High	50	123	1.94	1.63	12.5	11.9	0.083	5.2
	Medium		118	2.1	1.72	11.1	11.1	0.09	6.1
	Low		102	1.85	1.49	11.2	11	0.079	4.8
03S	High	50	174	2.42	2.19	13	12.6	0.103	8.2
	Medium		142	2.19	1.93	12.1	12	0.093	6.8
	Low		109	2.01	1.62	10.9	10.9	0.086	5.8
04S	High	50	202	3.1	2.63	12.6	12.1	0.132	6.4
	Medium		189	2.71	2.32	13.3	12.4	0.115	5
	Low		157	2.74	2.27	11.3	11.3	0.117	5.1
05S	High	50	279	4.28	3.57	12.8	12.1	0.182	14
	Medium		236	3.64	3.04	12.8	12	0.155	10.3
	Low		164	2.89	2.38	11.2	11.2	0.123	6.7
06S	High	50	325	4.73	3.93	13.5	12.4	0.201	18.9
	Medium		283	4.47	3.71	12.5	11.9	0.19	16.9
	Low		185	3.38	2.73	11	11	0.144	10
07S	High	50	364	4.91	4.19	14	12.8	0.209	5.4
	Medium		330	4.63	4.16	13	12.6	0.197	4.9
	Low		280	4.27	3.79	12.1	12.1	0.182	4.2
08S	High	50	405	4.99	4.53	14.3	13.2	0.212	7.6
	Medium		378	4.65	4.25	14.2	13.2	0.198	6.7
	Low		288	4.75	4.04	11.7	11.7	0.202	7
09S	High	50	443	5.35	4.84	14.5	13.3	0.228	8.6
	Medium		425	5.1	4.66	14.5	13.3	0.217	7.8
	Low		330	5.2	4.54	11.9	11.9	0.221	8.1
10S	High	50	489	7.58	6.39	12.6	12	0.323	11.9
	Medium		472	7.06	5.97	13	12.2	0.301	10.4
	Low		338	5.51	4.72	11.7	11.7	0.234	6.5

Note: Air Conditions: EDB/EWB 24.4/17.2°C

Water Conditions: EWT/LWT 7.2/12.8°C

ΔT: 5.6°C.

42MEL SERIES LOW STATIC DOUBLE SKIN DUCTED FCU WITH PLENUM

Model MEL-	Speed	ESP (Pa)	Air Flow (L/S)	Capacity (KW)		Air Off FCU (°C)		Water Flow (L/S)	Water Pressure Drop (kPa)
				Total	Sensible	DB	WB		
02D	High	50	123	1.94	1.63	12.5	11.9	0.083	5.2
	Medium		118	2.1	1.72	11.1	11.1	0.09	6.1
	Low		102	1.85	1.49	11.2	11	0.079	4.8
03D	High	50	174	2.42	2.19	13	12.6	0.103	8.2
	Medium		142	2.19	1.93	12.1	12	0.093	6.8
	Low		109	2.01	1.62	10.9	10.9	0.086	5.8
04D	High	50	202	3.1	2.63	12.6	12.1	0.132	6.4
	Medium		189	2.71	2.32	13.3	12.4	0.115	5
	Low		157	2.74	2.27	11.3	11.3	0.117	5.1
05D	High	50	279	4.28	3.57	12.8	12.1	0.182	14
	Medium		236	3.64	3.04	12.8	12	0.155	10.3
	Low		164	2.89	2.38	11.2	11.2	0.123	6.7
06D	High	50	325	4.73	3.93	13.5	12.4	0.201	18.9
	Medium		283	4.47	3.71	12.5	11.9	0.19	16.9
	Low		185	3.38	2.73	11	11	0.144	10
07D	High	50	364	4.91	4.19	14	12.8	0.209	5.4
	Medium		330	4.63	4.16	13	12.6	0.197	4.9
	Low		280	4.27	3.79	12.1	12.1	0.182	4.2
08D	High	50	405	4.99	4.53	14.3	13.2	0.212	7.6
	Medium		378	4.65	4.25	14.2	13.2	0.198	6.7
	Low		288	4.75	4.04	11.7	11.7	0.202	7
09D	High	50	443	5.35	4.84	14.5	13.3	0.228	8.6
	Medium		425	5.1	4.66	14.5	13.3	0.217	7.8
	Low		330	5.2	4.54	11.9	11.9	0.221	8.1
10D	High	50	489	7.58	6.39	12.6	12	0.323	11.9
	Medium		472	7.06	5.97	13	12.2	0.301	10.4
	Low		338	5.51	4.72	11.7	11.7	0.234	6.5

Note: Air Conditions: EDB/EWB 24.4/17.2°C

Water Conditions: EWT/LWT 7.2/12.8°C

ΔT: 5.6°C.

- - For other design conditions, please apply the selection program to finalize your applications - -



PERFORMANCE RATING

42MEL SERIES EXPOSED DECORATIVE FCU WITH CABINET

Model MEL-	Speed	ESP (Pa)	Air Flow (L/S)	Capacity (KW)		Air Off FCU (°C)		Water Flow (L/S)	Water Pressure Drop (kPa)
				Total	Sensible	DB	WB		
02E	High	0	161	2.38	2.05	12.9	12.3	0.101	7.7
	Medium		154	2.3	1.97	12.8	12.2	0.098	7.2
	Low		125	1.96	1.64	12.5	11.9	0.083	5.3
03E	High	0	236	3.19	2.94	13.2	12.7	0.136	13.8
	Medium		179	2.48	2.24	13.1	12.6	0.106	8.6
	Low		121	2.08	1.74	11.4	11.4	0.089	6.2
04E	High	0	263	3.94	3.4	12.7	12.2	0.168	10
	Medium		236	3.55	3.05	12.7	12.2	0.151	8.3
	Low		195	2.87	2.45	13.1	12.3	0.122	5.5
05E	High	0	375	5.55	4.73	13	12.3	0.236	22.9
	Medium		323	4.88	4.11	12.9	12.2	0.208	18
	Low		244	3.75	3.12	12.8	12.1	0.16	10.9
06E	High	0	392	5.56	4.69	13.6	12.5	0.237	25.6
	Medium		358	5.14	4.3	13.5	12.4	0.219	22.1
	Low		251	4.18	3.48	11.9	11.6	0.178	14.9
07E	High	0	428	5.8	4.98	13.9	12.7	0.247	7.4
	Medium		392	5.28	4.52	14	12.8	0.225	6.2
	Low		363	4.9	4.19	14	12.7	0.209	5.4
08E	High	0	474	5.87	5.34	14.2	13.2	0.25	10.3
	Medium		439	5.43	4.94	14.3	13.2	0.231	8.9
	Low		337	4.52	4.13	13.3	12.8	0.192	6.3
09E	High	0	488	5.91	5.36	14.5	13.2	0.252	10.3
	Medium		481	5.82	5.28	14.5	13.2	0.248	10
	Low		384	4.89	4.49	13.8	13	0.208	7.3
10E	High	0	564	8.52	7.28	12.7	12.2	0.363	14.9
	Medium		543	8.28	7.04	12.7	12.1	0.352	14.1
	Low		406	5.84	5.02	13.2	12.4	0.249	7.3

Note: Air Conditions: EDB/EWB 24.4/17.2°C

Water Conditions: EWT/LWT 7.2/12.8°C

ΔT: 5.6°C.

42MELD SERIES LOW STATIC DUCTED FCU WITH PLENUM

Model MELD	Speed	ESP (Pa)	Air Flow (L/S)	Capacity (KW)		Air Off FCU (°C)		Water Flow (L/S)	Water Pressure Drop (kPa)
				Total	Sensible	DB	WB		
02S	High	50	123	1.64	1.36	14.5	12.8	0.044	6.6
	Medium		118	1.59	1.31	14.4	12.8	0.043	6.3
	Low		102	1.39	1.06	14.9	12.7	0.037	5.3
03S	High	50	174	2.65	2.31	12.4	12.1	0.071	14.8
	Medium		142	2.29	1.97	11.8	11.8	0.061	11.3
	Low		109	1.86	1.5	11.9	11.4	0.05	7.7
04S	High	50	202	3.04	2.59	12.8	12.2	0.081	6.7
	Medium		189	2.87	2.43	12.8	12.1	0.077	6.1
	Low		157	2.47	2.04	12.7	11.9	0.066	4.6
056S	High	50	279	4.2	3.35	13.6	12.2	0.113	14.7
	Medium		236	3.75	2.98	13	11.9	0.1	11.9
	Low		164	2.87	2.29	11.7	11.3	0.077	7.3
06S	High	50	325	5.39	4.3	12.5	11.6	0.144	21.2
	Medium		283	4.89	3.9	12	11.4	0.131	17.7
	Low		172	3.34	2.62	10.5	10.5	0.089	8.7
07S	High	50	364	5.75	4.58	13.1	11.9	0.154	23.5
	Medium		330	5.41	4.31	12.6	11.7	0.145	21
	Low		280	5.05	4.04	11.4	11.1	0.135	18.5
08S	High	50	405	6.79	5.4	12.4	11.5	0.182	28
	Medium		378	6.48	5.18	12	11.4	0.174	25.6
	Low		288	5.36	4.28	11	10.9	0.144	17.9
09S	High	50	443	7.22	5.75	12.7	11.7	0.193	30.5
	Medium		425	7.01	5.59	12.5	11.6	0.188	28.9
	Low		330	5.9	4.71	11.5	11.1	0.158	20.8
10S	High	50	489	8.08	6.48	12.5	11.6	0.217	22.6
	Medium		472	7.88	6.37	12.2	11.6	0.211	21.6
	Low		338	6.23	5.02	11	10.9	0.167	13.9

NOTE: Air Conditions: EDB/EWB 24.4/17.2°C *

Water Conditions: EWT/LWT 5.5/14.4°C

ΔT: 8.9°C

-- For other design conditions, please apply the selection program to finalize your applications --



PERFORMANCE RATING

42MELD SERIES LOW STATIC DOUBLE SKIN DUCTED FCU WITH PLENUM

Model MELD	Speed	ESP (Pa)	Air Flow (L/S)	Capacity (KW)		Air Off FCU (°C)		Water Flow (L/S)	Water Pressure Drop (kPa)
				Total	Sensible	DB	WB		
02D	High	50	123	1.64	1.36	14.5	12.8	0.044	6.6
	Medium		118	1.59	1.31	14.4	12.8	0.043	6.3
	Low		102	1.39	1.06	14.9	12.7	0.037	5.3
03D	High	50	174	2.65	2.31	12.4	12.1	0.071	14.8
	Medium		142	2.29	1.97	11.8	11.8	0.061	11.3
	Low		109	1.86	1.5	11.9	11.4	0.05	7.7
04D	High	50	202	3.04	2.59	12.8	12.2	0.081	6.7
	Medium		189	2.87	2.43	12.8	12.1	0.077	6.1
	Low		157	2.47	2.04	12.7	11.9	0.066	4.6
056D	High	50	279	4.2	3.35	13.6	12.2	0.113	14.7
	Medium		236	3.75	2.98	13	11.9	0.1	11.9
	Low		164	2.87	2.29	11.7	11.3	0.077	7.3
06D	High	50	325	5.39	4.3	12.5	11.6	0.144	21.2
	Medium		283	4.89	3.9	12	11.4	0.131	17.7
	Low		172	3.34	2.62	10.5	10.5	0.089	8.7
07D	High	50	364	5.75	4.58	13.1	11.9	0.154	23.5
	Medium		330	5.41	4.31	12.6	11.7	0.145	21
	Low		280	5.05	4.04	11.4	11.1	0.135	18.5
08D	High	50	405	6.79	5.4	12.4	11.5	0.182	28
	Medium		378	6.48	5.18	12	11.4	0.174	25.6
	Low		288	5.36	4.28	11	10.9	0.144	17.9
09D	High	50	443	7.22	5.75	12.7	11.7	0.193	30.5
	Medium		425	7.01	5.59	12.5	11.6	0.188	28.9
	Low		330	5.9	4.71	11.5	11.1	0.158	20.8
10D	High	50	489	8.08	6.48	12.5	11.6	0.217	22.6
	Medium		472	7.88	6.37	12.2	11.6	0.211	21.6
	Low		338	6.23	5.02	11	10.9	0.167	13.9

NOTE: Air Conditions: EDB/EWB 24.4/17.2°C *

Water Conditions: EWT/LWT 5.5/14.4°C

ΔT: 8.9°C

42MELD SERIES EXPOSED DECORATIVE FCU WITH CABINET

Model MELD	Speed	ESP (Pa)	Air Flow (L/S)	Capacity (KW)		Air Off FCU (°C)		Water Flow (L/S)	Water Pressure Drop (kPa)
				Total	Sensible	DB	WB		
02E	High	0	161	2	1.69	14.9	13.1	0.054	16.7
	Medium		154	1.94	1.63	14.9	13.1	0.052	15.6
	Low		125	1.65	1.37	14.5	12.8	0.044	11.7
03E	High	0	236	3.53	3.1	12.6	12.2	0.094	25.2
	Medium		179	2.72	2.37	12.5	12.1	0.073	15.4
	Low		121	2.04	1.69	11.8	11.5	0.055	9
04E	High	0	263	3.75	3.25	13.2	12.5	0.101	9.9
	Medium		236	3.43	2.95	13.1	12.4	0.092	8.4
	Low		195	2.96	2.51	12.8	12.1	0.079	6.4
056E	High	0	375	5.63	4.52	13.5	12.2	0.151	25.5
	Medium		323	4.85	3.88	13.6	12.2	0.13	19.2
	Low		244	3.84	3.05	13.1	11.9	0.103	12.4
06E	High	0	392	6.5	5.21	12.4	11.6	0.174	30.2
	Medium		358	5.93	4.75	12.4	11.6	0.159	25.4
	Low		203	3.78	3.03	10.9	10.8	0.101	10.9
07E	High	0	428	6.63	5.32	13.2	12	0.178	30.7
	Medium		392	6.13	4.9	13.1	12	0.164	26.5
	Low		363	5.74	4.57	13.1	11.9	0.154	23.4
08E	High	0	474	7.75	6.22	12.6	11.7	0.208	36
	Medium		439	7.28	5.82	12.5	11.6	0.195	32
	Low		337	5.99	4.8	11.5	11.2	0.16	22.1
09E	High	0	488	7.8	6.26	12.8	11.8	0.209	35.4
	Medium		481	7.71	6.18	12.8	11.8	0.207	34.7
	Low		384	6.54	5.23	12.1	11.4	0.175	25.3
10E	High	0	564	9.18	7.4	12.5	11.7	0.246	28.7
	Medium		543	8.89	7.15	12.5	11.7	0.238	27
	Low		406	7.08	5.79	11.5	11.3	0.19	17.7

NOTE: Air Conditions: EDB/EWB 24.4/17.2°C *

Water Conditions: EWT/LWT 5.5/14.4°C

ΔT: 8.9°C

- - For other design conditions, please apply the selection program to finalize your applications - -



PERFORMANCE RATING

42MEH SERIES HIGH STATIC DUCTED FCU WITH PLENUM

Model MEH-	Speed	ESP (Pa)	Air Flow (L/S)	Capacity (KW)		Air Off FCU (°C)		Water Flow (L/S)	Water Pressure Drop (kPa)
				Total	Sensible	DB	WB		
12S	High	50	496	7.14	6.24	13	12.4	0.304	11.4
	Medium		472	6.58	5.8	13.3	12.6	0.28	9.8
	Low		432	5.83	5.23	13.5	12.7	0.248	7.8
14S	High	50	663	9.05	8.13	13.3	12.7	0.385	10.6
	Medium		566	7.68	6.98	13.3	12.7	0.327	7.8
	Low		380	5.79	5.15	12.1	12.1	0.247	4.6
16S	High	50	736	10.86	9.51	12.7	12.3	0.462	11.7
	Medium		661	9.32	8.32	13	12.5	0.397	8.8
	Low		484	6.99	6.38	12.5	12.4	0.298	5.1
18S	High	50	777	11.58	9.95	12.8	12.2	0.493	12.9
	Medium		755	11	9.48	13	12.4	0.468	11.7
	Low		614	8.69	7.66	13.1	12.5	0.37	7.5
20S	High	50	879	13.48	11.5	12.6	12.1	0.574	13
	Medium		850	12.81	10.93	12.8	12.2	0.546	11.8
	Low		736	10.55	9.05	13.3	12.4	0.449	8.2
24S	High	50	1090	15.69	13.09	13.5	12.4	0.668	23.8
	Medium		968	14.26	11.86	13.3	12.3	0.607	19.9
	Low		692	10.72	8.81	12.9	12	0.457	11.6
30S	High	50	1451	20.32	18.17	13.1	12.6	0.865	29.1
	Medium		1416	18.54	16.62	13.8	12.9	0.789	24.4
	Low		1009	12.44	11.63	14	13.2	0.529	11.5

Note: Air Conditions: EDB/EWB 24.4/17.2°C

Water Conditions: EWT/LWT 7.2/12.8°C

ΔT: 5.6°C.

42MEH SERIES HIGH STATIC DOUBLE SKIN DUCTED FCU WITH PLENUM

Model MEH-	Speed	ESP (Pa)	Air Flow (L/S)	Capacity (KW)		Air Off FCU (°C)		Water Flow (L/S)	Water Pressure Drop (kPa)
				Total	Sensible	DB	WB		
12D	High	50	496	7.14	6.24	13	12.4	0.304	11.4
	Medium		472	6.58	5.8	13.3	12.6	0.28	9.8
	Low		432	5.83	5.23	13.5	12.7	0.248	7.8
14D	High	50	663	9.05	8.13	13.3	12.7	0.385	10.6
	Medium		566	7.68	6.98	13.3	12.7	0.327	7.8
	Low		380	5.79	5.15	12.1	12.1	0.247	4.6
16D	High	50	736	10.86	9.51	12.7	12.3	0.462	11.7
	Medium		661	9.32	8.32	13	12.5	0.397	8.8
	Low		484	6.99	6.38	12.5	12.4	0.298	5.1
18D	High	50	777	11.58	9.95	12.8	12.2	0.493	12.9
	Medium		755	11	9.48	13	12.4	0.468	11.7
	Low		614	8.69	7.66	13.1	12.5	0.37	7.5
20D	High	50	879	13.48	11.5	12.6	12.1	0.574	13
	Medium		850	12.81	10.93	12.8	12.2	0.546	11.8
	Low		736	10.55	9.05	13.3	12.4	0.449	8.2
24D	High	50	1090	15.69	13.09	13.5	12.4	0.668	23.8
	Medium		968	14.26	11.86	13.3	12.3	0.607	19.9
	Low		692	10.72	8.81	12.9	12	0.457	11.6
30D	High	50	1451	20.32	18.17	13.1	12.6	0.865	29.1
	Medium		1416	18.54	16.62	13.8	12.9	0.789	24.4
	Low		1009	12.44	11.63	14	13.2	0.529	11.5

Note: Air Conditions: EDB/EWB 24.4/17.2°C

Water Conditions: EWT/LWT 7.2/12.8°C

ΔT: 5.6°C.

- - For other design conditions, please apply the selection program to finalize your applications - -



PERFORMANCE RATING

42MEH SERIES EXPOSED DECORATIVE FCU WITH CABINET

Model MEH-	Speed	ESP (Pa)	Air Flow (L/S)	Capacity (KW)		Air Off FCU (°C)		Water Flow (L/S)	Water Pressure Drop (kPa)
				Total	Sensible	DB	WB		
12E	High	35	511	7.36	6.45	13	12.4	0.313	12.1
	Medium		486	6.89	6.05	13.1	12.5	0.293	10.7
	Low		443	6.02	5.37	13.4	12.7	0.256	8.3
14E	High	35	676	9.25	8.31	13.3	12.7	0.394	11.1
	Medium		588	7.96	7.22	13.3	12.7	0.339	8.4
	Low		397	5.93	5.32	12.2	12.2	0.253	4.8
16E	High	35	751	11.07	9.7	12.7	12.3	0.471	12.2
	Medium		678	9.64	8.57	13	12.5	0.411	9.4
	Low		507	7.21	6.58	12.6	12.5	0.307	5.4
18E	High	35	793	11.81	10.16	12.8	12.2	0.503	13.4
	Medium		772	11.44	9.84	12.9	12.3	0.487	12.6
	Low		644	9.02	7.91	13.3	12.6	0.384	8
20E	High	35	893	13.71	11.7	12.6	12.1	0.584	13.5
	Medium		862	13.1	11.18	12.7	12.1	0.558	12.4
	Low		751	10.83	9.27	13.2	12.4	0.461	8.6
24E	High	35	1112	15.95	13.33	13.6	12.4	0.679	24.6
	Medium		979	14.39	11.98	13.3	12.3	0.613	20.2
	Low		713	11.02	9.06	12.9	12	0.469	12.2
30E	High	35	1526	21.01	18.93	13.2	12.7	0.894	31
	Medium		1520	20.95	18.86	13.2	12.6	0.892	30.8
	Low		1085	11.98	11.2	15.1	13.6	0.51	10.7

Note: Air Conditions: EDB/EWB 24.4/17.2°C

Water Conditions: EWT/LWT 7.2/12.8°C

ΔT: 5.6°C.

42MEHD SERIES HIGH STATIC DUCTED FCU WITH PLENUM

Model MEHD	Speed	ESP (Pa)	Air Flow (L/S)	Capacity (KW)		Air Off FCU (°C)		Water Flow (L/S)	Water Pressure Drop (kPa)
				Total	Sensible	DB	WB		
12S	High	50	496	8.26	6.66	12.3	11.6	0.221	13.2
	Medium		472	7.94	6.54	11.9	11.5	0.213	12.3
	Low		432	7.38	5.97	11.9	11.4	0.198	10.7
14S	High	50	663	11.47	9.18	11.9	11.3	0.307	29.8
	Medium		566	10.34	8.34	11.1	11	0.277	24.5
	Low		380	7.8	5.99	10.1	10.1	0.209	14.4
16S	High	50	736	13.51	10.55	11.4	10.9	0.362	24.8
	Medium		661	12.51	9.79	11	10.7	0.335	21.5
	Low		484	9.96	7.63	10.1	10.1	0.267	14
18S	High	50	777	14.08	10.93	11.7	11	0.377	26.6
	Medium		755	13.76	10.73	11.6	11	0.369	25.5
	Low		614	11.86	9.35	10.6	10.6	0.318	19.2
20S	High	50	879	14.39	11.53	12.5	11.7	0.385	23.6
	Medium		850	14.1	11.43	12.2	11.6	0.378	22.7
	Low		736	12.87	10.48	11.5	11.3	0.345	19.1
24S	High	50	1090	20.8	16.04	11.1	10.7	0.557	28
	Medium		968	19.14	14.77	10.6	10.4	0.513	23.9
	Low		692	14.79	11.15	9.8	9.8	0.396	14.7
30S	High	50	1451	24.43	19.1	12.5	11.5	0.654	51
	Medium		1416	24.05	18.81	12.4	11.5	0.644	49.5
	Low		1009	19.33	15.29	10.6	10.6	0.518	32.8

NOTE: Air Conditions: EDB/EWB 24.4/17.2°C *

Water Conditions: EWT/LWT 5.5/14.4°C

ΔT: 8.9°C

- - For other design conditions, please apply the selection program to finalize your applications - -

PERFORMANCE RATING

42MEHD SERIES HIGH STATIC DOUBLE SKIN DUCTED FCU WITH PLENUM

Model MEHD	Speed	ESP (Pa)	Air Flow (L/S)	Capacity (KW)		Air Off FCU (°C)		Water Flow (L/S)	Water Pressure Drop (kPa)
				Total	Sensible	DB	WB		
12D	High	50	496	8.26	6.66	12.3	11.6	0.221	13.2
	Medium		472	7.94	6.54	11.9	11.5	0.213	12.3
	Low		432	7.38	5.97	11.9	11.4	0.198	10.7
14D	High	50	663	11.47	9.18	11.9	11.3	0.307	29.8
	Medium		566	10.34	8.34	11.1	11	0.277	24.5
	Low		380	7.8	5.99	10.1	10.1	0.209	14.4
16D	High	50	736	13.51	10.55	11.4	10.9	0.362	24.8
	Medium		661	12.51	9.79	11	10.7	0.335	21.5
	Low		484	9.96	7.63	10.1	10.1	0.267	14
18D	High	50	777	14.08	10.93	11.7	11	0.377	26.6
	Medium		755	13.76	10.73	11.6	11	0.369	25.5
	Low		614	11.86	9.35	10.6	10.6	0.318	19.2
20D	High	50	879	14.39	11.53	12.5	11.7	0.385	23.6
	Medium		850	14.1	11.43	12.2	11.6	0.378	22.7
	Low		736	12.87	10.48	11.5	11.3	0.345	19.1
24D	High	50	1090	20.8	16.04	11.1	10.7	0.557	28
	Medium		968	19.14	14.77	10.6	10.4	0.513	23.9
	Low		692	14.79	11.15	9.8	9.8	0.396	14.7
30D	High	50	1451	24.43	19.1	12.5	11.5	0.654	51
	Medium		1416	24.05	18.81	12.4	11.5	0.644	49.5
	Low		1009	19.33	15.29	10.6	10.6	0.518	32.8

NOTE: Air Conditions: EDB/EWB 24.4/17.2°C *

Water Conditions: EWT/LWT 5.5/14.4°C

ΔT: 8.9°C

42MEHD SERIES EXPOSED DECORATIVE FCU WITH CABINET

Model MEHD	Speed	ESP (Pa)	Air Flow (L/S)	Capacity (KW)		Air Off FCU (°C)		Water Flow (L/S)	Water Pressure Drop (kPa)
				Total	Sensible	DB	WB		
12E	High	35	511	8.55	6.9	12.2	11.6	0.229	14.1
	Medium		486	8.13	6.63	12.1	11.6	0.218	12.8
	Low		443	7.55	6.18	11.8	11.5	0.202	11.2
14E	High	35	676	11.66	9.35	11.9	11.4	0.312	30.7
	Medium		588	10.6	8.53	11.3	11.1	0.284	25.6
	Low		397	8.05	6.21	10.2	10.2	0.216	15.3
16E	High	35	751	13.75	10.75	11.5	11	0.368	25.7
	Medium		678	12.74	9.96	11.1	10.8	0.341	22.2
	Low		507	10.31	7.94	10.2	10.2	0.276	14.9
18E	High	35	793	14.33	11.14	11.7	11.1	0.384	27.5
	Medium		772	14	10.88	11.7	11	0.375	26.3
	Low		644	12.26	9.7	10.8	10.7	0.328	20.5
20E	High	35	893	14.62	11.71	12.5	11.7	0.392	24.3
	Medium		862	14.23	11.48	12.4	11.6	0.381	23.1
	Low		751	13.05	10.66	11.6	11.3	0.35	19.6
24E	High	35	1112	21.36	16.45	11.1	10.6	0.572	29.4
	Medium		979	19.31	14.9	10.7	10.4	0.517	24.3
	Low		713	15.11	11.43	9.8	9.8	0.405	15.3
30E	High	35	1526	25.48	20.05	12.6	11.6	0.682	55.2
	Medium		1520	25.39	19.97	12.5	11.6	0.68	54.8
	Low		1085	20.38	16.15	10.9	10.8	0.546	36.2

NOTE: Air Conditions: EDB/EWB 24.4/17.2°C *

Water Conditions: EWT/LWT 5.5/14.4°C

ΔT: 8.9°C

- - For other design conditions, please apply the selection program to finalize your applications - -



ELECTRICAL DATA

42MEL SERIES LOW STATIC DUCTED AND DOUBLE SKIN DUCTED FCUs WITH PLENUM AC MOTOR DATA:

Model	Unit Size	Power Supply (V-Ph-Hz)	Speed	Fan Speed (rpm)	Power Factor	No. of Poles	Nominal Power Output (W) x QTY	Power Input (W)	Running Amps
MEL	2	220/240-1-50	High	1400	0.95	4	50 / 1	83	0.35
			Medium	1330				68	0.29
			Low	1150				60	0.28
	3		High	1400	0.95	4	50 x 1	100	0.43
			Medium	1330				85	0.37
			Low	1150				74	0.35
	4		High	1400	0.95	4	80 x 1	173	0.79
			Medium	1330				131	0.57
			Low	1150				106	0.56
	5		High	1400	0.95	4	80 x 1	190	0.85
			Medium	1330				145	0.64
			Low	1150				113	0.55
	6		High	1400	0.95	4	80 x 1	225	0.98
			Medium	1330				191	0.83
			Low	1150				129	0.61
	7		High	1400	0.95	4	125 x 1	210	0.9
			Medium	1330				192	0.84
			Low	1150				170	0.75
	8		High	1400	0.95	4	125 x 1	241	1.02
			Medium	1330				224	0.96
			Low	1150				188	0.83
	9		High	1400	0.95	4	150 x 1	269	1.14
			Medium	1330				239	1.02
			Low	1150				203	0.89
	10		High	1400	0.95	4	150 x 1	279	1.2
			Medium	1330				260	1.1
			Low	1150				223	0.96

Note: Motor nameplate amps may vary. All values are based on 50Pa ESP

42MEL SERIES LOW STATIC DECORATIVE FCUs WITH PLENUM AC MOTOR DATA:

Model	Unit Size	Power Supply (V-Ph-Hz)	Speed	Fan Speed (rpm)	Power Factor	No. of Poles	Nominal Power Output (W) x QTY	Power Input (W)	Running Amps
MEL	2	220/240-1-50	High	1400	0.95	4	50 x 1	86	0.37
			Medium	1330				74	0.32
			Low	1150				68	0.33
	3		High	1400	0.95	4	50 x 1	109	0.46
			Medium	1330				98	0.43
			Low	1150				90	0.4
	4		High	1400	0.95	4	80 x 1	179	0.81
			Medium	1330				144	0.62
			Low	1150				123	0.61
	5		High	1400	0.95	4	80 x 1	205	0.9
			Medium	1330				160	0.7
			Low	1150				132	0.61
	6		High	1400	0.95	4	80 x 1	237	1.03
			Medium	1330				210	0.91
			Low	1150				152	0.69
	7		High	1400	0.95	4	125 x 1	237	1.02
			Medium	1330				221	0.96
			Low	1150				211	0.92
	8		High	1400	0.95	4	125 x 1	269	1.14
			Medium	1330				256	1.09
			Low	1150				216	0.93
	9		High	1400	0.95	4	150 x 1	295	1.25
			Medium	1330				268	1.14
			Low	1150				236	1.01
	10		High	1400	0.95	4	150 x 1	304	1.3
			Medium	1330				286	1.21
			Low	1150				246	1.05

Note: Motor nameplate amps may vary. All values are based on 0Pa ESP



ELECTRICAL DATA

42MELD SERIES LOW STATIC DUCTED AND DOUBLE SKIN DUCTED FCUs WITH PLENUM AC MOTOR DATA:

Model	Unit Size	Power Supply (V-Ph-Hz)	Speed	Fan Speed (rpm)	Power Factor	No. of Poles	Nominal Power Output (W) x QTY	Power Input (W)	Running Amps
MELD	2	220/240-1-50	High	1400	0.95	4	50 x 1	83	0.35
			Medium	1330				68	0.29
			Low	1150				60	0.28
	3		High	1400	0.95	4	50 x 1	100	0.43
			Medium	1330				85	0.37
			Low	1150				74	0.35
	4		High	1400	0.95	4	80 x 1	173	0.79
			Medium	1330				131	0.57
			Low	1150				106	0.56
	5		High	1400	0.95	4	80 x 1	190	0.85
			Medium	1330				145	0.64
			Low	1150				113	0.55
	6		High	1400	0.95	4	80 x 1	225	0.98
			Medium	1330				191	0.83
			Low	1150				129	0.61
	7		High	1400	0.95	4	125 x 1	210	0.9
			Medium	1330				192	0.84
			Low	1150				170	0.75
	8		High	1400	0.95	4	125 x 1	241	1.02
			Medium	1330				224	0.96
			Low	1150				188	0.83
	9		High	1400	0.95	4	150 x 1	269	1.14
			Medium	1330				239	1.02
			Low	1150				203	0.89
	10		High	1400	0.95	4	150 x 1	279	1.2
			Medium	1330				260	1.1
			Low	1150				223	0.96

Note: Motor nameplate amps may vary. All values are based on 50Pa ESP

42MEL SERIES LOW STATIC DECORATIVE FCUs WITH PLENUM AC MOTOR DATA:

Model	Unit Size	Power Supply (V-Ph-Hz)	Speed	Fan Speed (rpm)	Power Factor	No. of Poles	Nominal Power Output (W) x QTY	Power Input (W)	Running Amps
MELD	2	220/240-1-50	High	1400	0.95	4	50 x 1	86	0.37
			Medium	1330				74	0.32
			Low	1150				68	0.33
	3		High	1400	0.95	4	50 x 1	109	0.46
			Medium	1330				98	0.43
			Low	1150				90	0.4
	4		High	1400	0.95	4	80 x 1	179	0.81
			Medium	1330				144	0.62
			Low	1150				123	0.61
	5		High	1400	0.95	4	80 x 1	205	0.9
			Medium	1330				160	0.7
			Low	1150				132	0.61
	6		High	1400	0.95	4	80 x 1	237	1.03
			Medium	1330				210	0.91
			Low	1150				152	0.69
	7		High	1400	0.95	4	125 x 1	237	1.02
			Medium	1330				221	0.96
			Low	1150				211	0.92
	8		High	1400	0.95	4	125 x 1	269	1.14
			Medium	1330				256	1.09
			Low	1150				216	0.93
	9		High	1400	0.95	4	150 x 1	295	1.25
			Medium	1330				268	1.14
			Low	1150				236	1.01
	10		High	1400	0.95	4	150 x 1	304	1.3
			Medium	1330				286	1.21
			Low	1150				246	1.05

Note: Motor nameplate amps may vary. All values are based on 0Pa ESP



ELECTRICAL DATA

42MEH SERIES HIGH STATIC DUCTED AND DOUBLE SKIN DUCTED FCUs WITH PLENUM AC MOTOR DATA:

Model	Unit Size	Power Supply (V-Ph-Hz)	Speed	Fan Speed (rpm)	Power Factor	No. of Poles	Nominal Power Output (W) x QTY	Power Input (W)	Running Amps
MEH	12	220/240-1-50	High	1350	0.95	4	300 x 1	369	1.73
			Medium	1250				330	1.46
			Low	1000				258	1.11
	14		High	1350	0.95	4	200 x 1	463	1.98
			Medium	1250				374	1.6
			Low	1000				248	1.08
	16		High	1350	0.95	4	250 x 1	493	2.12
			Medium	1250				412	1.78
			Low	1000				285	1.27
	18		High	1350	0.95	4	300 x 1	519	2.31
			Medium	1250				472	2.09
			Low	1000				358	1.63
	20		High	1350	0.95	4	500 x 1	603	2.72
			Medium	1250				516	2.26
			Low	1000				421	1.91
	24		High	1350	0.95	4	500 x 1	746	3.3
			Medium	1250				726	3.17
			Low	1000				518	2.45
	30		High	1350	0.95	4	800 x 1	1026	4.67
			Medium	1250				942	4.11
			Low	1000				685	3.29

Note: Motor nameplate amps may vary. All values are based on 50Pa ESP

42MEH SERIES HIGH STATIC DECORATIVE FCUs WITH PLENUM AC MOTOR DATA:

Model	Unit Size	Power Supply (V-Ph-Hz)	Speed	Fan Speed (rpm)	Power Factor	No. of Poles	Nominal Power Output (W) x QTY	Power Input (W)	Running Amps
MEH	12	220/240-1-50	High	1350	0.95	4	300 x 1	369	1.73
			Medium	1250				330	1.46
			Low	1000				258	1.11
	14		High	1350	0.95	4	200 x 1	463	1.98
			Medium	1250				374	1.6
			Low	1000				248	1.08
	16		High	1350	0.95	4	250 x 1	493	2.12
			Medium	1250				412	1.78
			Low	1000				285	1.27
	18		High	1350	0.95	4	300 x 1	519	2.31
			Medium	1250				472	2.09
			Low	1000				358	1.63
	20		High	1350	0.95	4	500 x 1	603	2.72
			Medium	1250				516	2.26
			Low	1000				421	1.91
	24		High	1350	0.95	4	500 x 1	746	3.3
			Medium	1250				726	3.17
			Low	1000				518	2.45
	30		High	1350	0.95	4	800 x 1	1026	4.67
			Medium	1250				942	4.11
			Low	1000				685	3.29

Note: Motor nameplate amps may vary. All values are based on 35Pa ESP



ELECTRICAL DATA

42MEHD SERIES HIGH STATIC DUCTED AND DOUBLE SKIN DUCTED FCUs WITH PLENUM AC MOTOR DATA:

Model	Unit Size	Power Supply (V-Ph-Hz)	Speed	Fan Speed (rpm)	Power Factor	No. of Poles	Nominal Power Output (W) x QTY	Power Input (W)	Running Amps
MEHD	12	220/240-1-50	High	1350	0.95	4	300 x 1	369	1.73
			Medium	1250				330	1.46
			Low	1000				258	1.11
	14		High	1350	0.95	4	200 x 1	463	1.98
			Medium	1250				374	1.6
			Low	1000				248	1.08
	16		High	1350	0.95	4	250 x 1	493	2.12
			Medium	1250				412	1.78
			Low	1000				285	1.27
	18		High	1350	0.95	4	300 x 1	519	2.31
			Medium	1250				472	2.09
			Low	1000				358	1.63
	20		High	1350	0.95	4	500 x 1	603	2.72
			Medium	1250				516	2.26
			Low	1000				421	1.91
	24		High	1350	0.95	4	500 x 1	746	3.3
			Medium	1250				726	3.17
			Low	1000				518	2.45
	30		High	1350	0.95	4	800 x 1	1026	4.67
			Medium	1250				942	4.11
			Low	1000				685	3.29

Note: Motor nameplate amps may vary. All values are based on 50Pa ESP

42MEHD SERIES HIGH STATIC DECORATIVE FCUs WITH PLENUM AC MOTOR DATA:

Model	Unit Size	Power Supply (V-Ph-Hz)	Speed	Fan Speed (rpm)	Power Factor	No. of Poles	Nominal Power Output (W) x QTY	Power Input (W)	Running Amps
MEHD	12	220/240-1-50	High	1350	0.95	4	300 x 1	369	1.73
			Medium	1250				330	1.46
			Low	1000				258	1.11
	14		High	1350	0.95	4	200 x 1	463	1.98
			Medium	1250				374	1.6
			Low	1000				248	1.08
	16		High	1350	0.95	4	250 x 1	493	2.12
			Medium	1250				412	1.78
			Low	1000				285	1.27
	18		High	1350	0.95	4	300 x 1	519	2.31
			Medium	1250				472	2.09
			Low	1000				358	1.63
	20		High	1350	0.95	4	500 x 1	603	2.72
			Medium	1250				516	2.26
			Low	1000				421	1.91
	24		High	1350	0.95	4	500 x 1	746	3.3
			Medium	1250				726	3.17
			Low	1000				518	2.45
	30		High	1350	0.95	4	800 x 1	1026	4.67
			Medium	1250				942	4.11
			Low	1000				685	3.29

Note: Motor nameplate amps may vary. All values are based on 35Pa ESP

EC MOTOR (OPTIONAL FEATURE)

EC motor provides high efficiency and precise airflow control in a 42 frame package. These motor are coming along with inbuilt internal motor controller and BMS connectivity. Our EC motors are flexible mechanical designs integrates into single or dual blowers as well as fan applications.

Key Features and Benefits:

- Available in single and dual shaft configurations.
- Tri-voltage (one model for multiple applications).
- Multiple input options compatible with a wide variety of control systems.
- Fully programmable to the specific application.
- Integrated motor and control.

Specification:

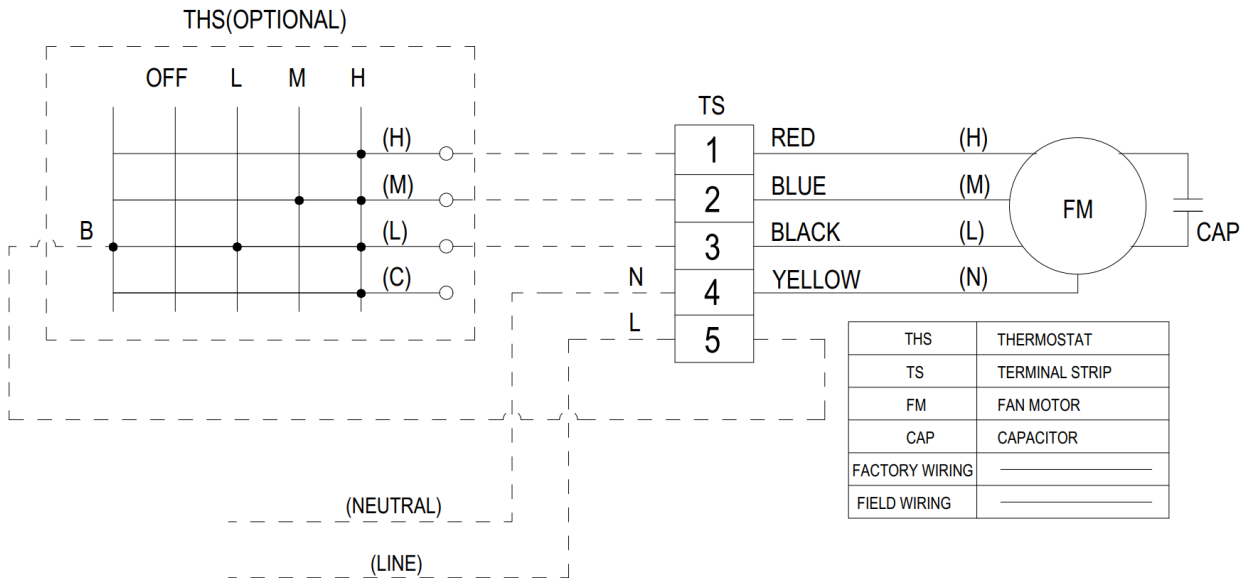
- Horse Power : 1/4 ~ 1/8 HP
- Voltage : 115 / 230 / 277 V (tri-voltage)
- Speeds : 300-1800 RPM, OR 300-1200 RPM
- Inputs : 0-10V, PWM or 3 - 24V Speed Taps
- Operation Modes : Constant Torque, Constant Speed
- Frame : NEMA®† 42
- Enclosure : Open Air Over (OAO)
- Efficiency : Up to 80%
- Mounting : Resilient, Stud or Belly Band



Controller
(Optional)

WIRING DIAGRAM

42MEL/ MELD SERIES LOW STATIC DUCTED, DOUBLE SKIN DUCTED & DECORATIVE FCUs WITH PLENUM SINGLE MOTOR WIRING DIAGRAM (AC MOTOR)

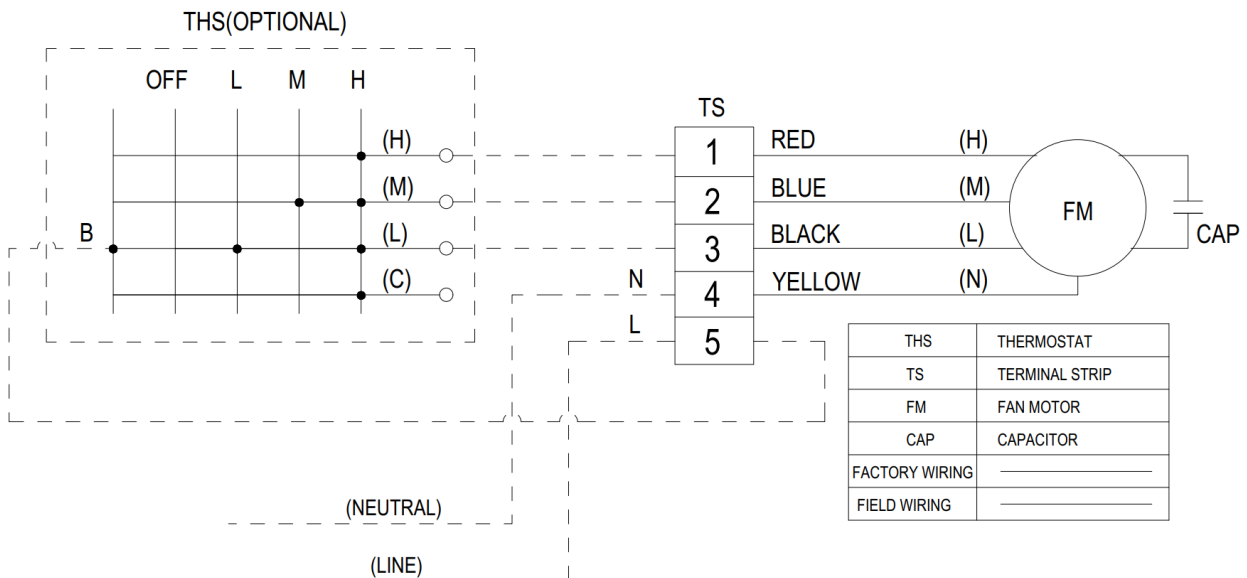


Note:

1. Caution – disconnect power before servicing, wait for at least 20 sec to allow current completely drain off from driver.
2. Use 14 AWG, 75°C MIN, copper conductor.
3. Motor(s) thermally protected.

WIRING DIAGRAM

42MEH/ MEHD SERIES HIGH STATIC DCUTED, DOUBLE SKIN DUCTED & DECORATIVE FCUs WITH PLENUM SINGLE MOTOR WIRING DIAGRAM (AC MOTOR)

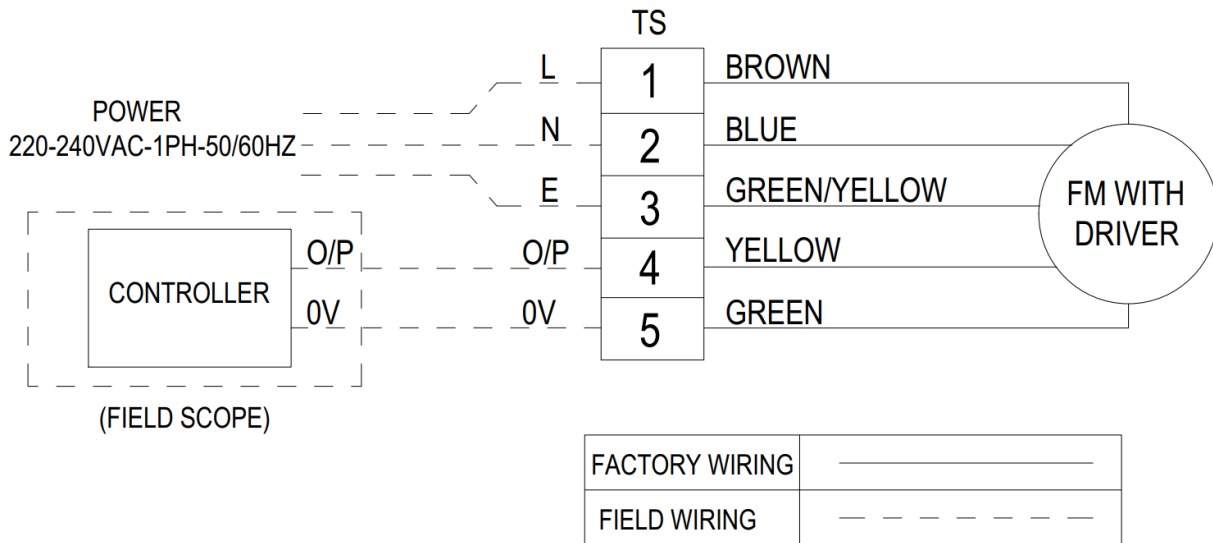


Note:

1. Caution – disconnect power before servicing, wait for at least 20 sec to allow current completely drain off from driver.
2. Use 14 AWG, 75°C MIN, copper conductor.
3. Motor(s) thermally protected.

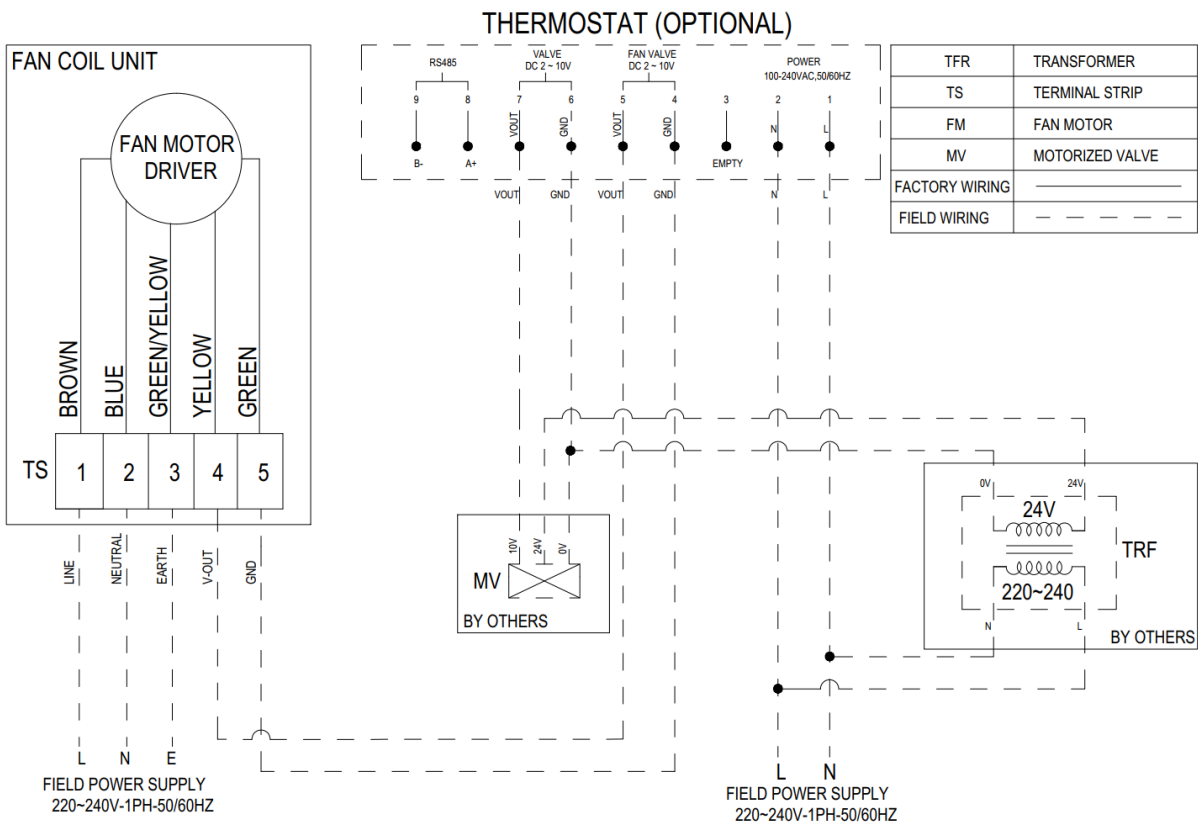
WIRING DIAGRAM

42MEL/ MELD SERIES LOW STATIC DUCTED, DOUBLE SKIN DUCTED & DECORATIVE FCUs WITH PLENUM SINGLE MOTOR WIRING DIAGRAM (EC MOTOR) – WITHOUT CONTROLLER (FIELD SCOPE)



WIRING DIAGRAM

SINGLE MOTOR WIRING DIAGRAM (EC MOTOR) – WITH CONTROLLER (FACTORY OPTION)

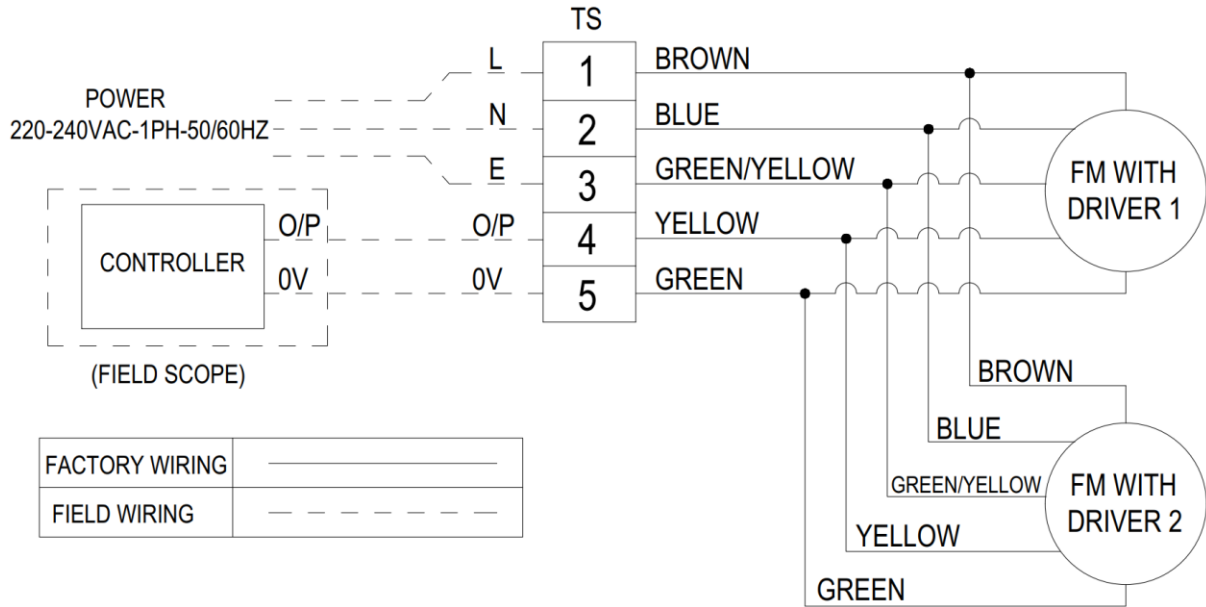


Note:

1. Caution – disconnect power before servicing, wait for at least 20 sec to allow current completely drain off from driver.
2. Controller can be provided as optional item.
3. Snap apart carefully at hinge to separate cover from the control box.

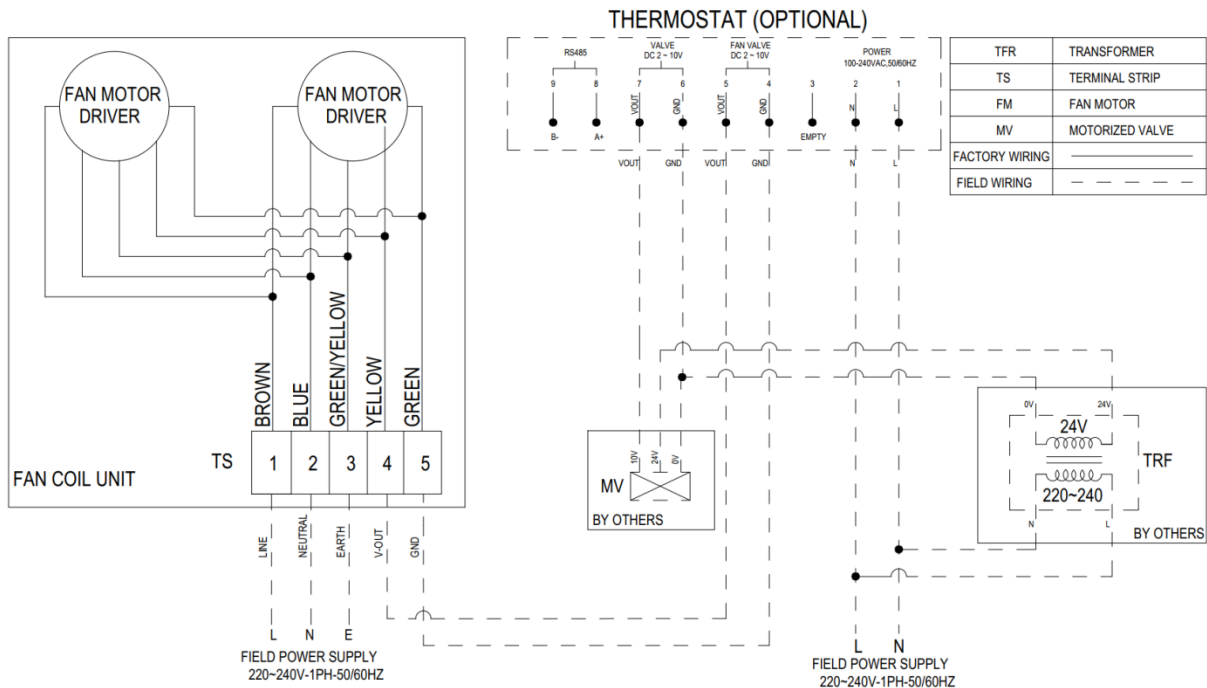
WIRING DIAGRAM

42MEH/MEHD SERIES HIGH STATIC DUCTED, DOUBLE SKIN DUCTED & DECORATIVE FCUs WITH PLENUM DOUBLE MOTOR WIRING DIAGRAM (EC MOTOR) – WITHOUT CONTROLLER (FIELD SCOPE)



WIRING DIAGRAM

DOUBLE MOTOR WIRING DIAGRAM (EC MOTOR) – WITH CONTROLLER (FACTORY OPTION)



Note:

1. Caution – disconnect power before servicing, wait for at least 20 sec to allow current completely drain off from driver.
2. Controller can be provided as optional item.
3. Snap apart carefully at hinge to separate cover from the control box.
4. MEH/MEHD12 units have a single motor, remaining units are equipped with double motors and double fans.

GUIDE SPECIFICATIONS

42 ME SERIES FCU GUIDE SPECIFICATIONS

Size Range: 200 to 3000 cfm

PART 1 – GENERAL

1.1 System Description

Horizontal, room fan coil units are to be installed above ceiling for ducting, or with cabinet for exposed Ceiling installations.

1.2 Quality Assurance

- A. Carrier fan coil units are tested in accordance with Eurovent standard.(Refer page no. 4 for Eurovent website link).
- B. Standard insulations are with DCL (Dubai Central Laboratory) conformity mark and complying with BS476 part 6&7 and fire performance tested as per ASTM E84 standards.
- C. Insulation complies with NFPA 90A.
- D. Standard fan coil unit is completely insulated in fan section as well as coil section.
- E. Unit cabinet shall be with G90 galvanized steel sheet (0.275 kg of zinc per sq. metre) complying with JIS-G3302 and ASTM A653
- F. Each coil is factory tested for leakage at 350 psig nitrogen pressure with coil submerged in water.
- G. Factory shall be ISO-9001&18001 certified.

1.3 Delivery , Storage and Handling

Each unit is individually packaged from point of manufacture. Units shall be handled and stored in accordance with the manufacturer's instructions.

PART 2 – PRODUCT

2.1 General

Factory assembled, horizontal, blow-through type fan coil unit for exposed ceiling or ducted installations. Units are complete with water coil, fan(s), motor(s), drain pan, filters and all required wiring, collars for ducted units (on the supply side only). Carrier standard fan coil unit casing is manufactured from heavy gauge G90 galvanized steel sheet. Standards unit's inner surfaces for the cooling coil section and entire return air plenum section are insulated with 6mm thick NBR (Nitrile Butadiene Rubber) Electrometric closed cell Foam insulation, 50kg/m³ density. The drain pan is

polyester powder coated on both sides & insulated outside with 3mm thick NBR insulation. Standard insulation is highly flexible, closed cell insulation material with high water vapor diffusion resistance and low thermal conductivity.

2.2 MEL / MELD–Low Static Ducted Units & MEH / MEHD–High Static Ducted Units

Carrier standard ducted units are with factory installed plenum section and cleanable aluminum mesh filter. Units are equipped with removable panels to access the fan motor assemblies easily. Standards ducted unit's inner surfaces for the cooling coil section and entire return air plenum section are insulated with NBR Elastomeric closed cell Foam insulation, 50kg/m³ density and galvanized steel drain pan is polyester powder coated on both sides & insulated outside.

2.3 MEL / MELD–Decorative Units & MEH / MEHD–Decorative Units

Carrier standard decorative units are with factory installed plenum section and cleanable aluminum mesh filter. Units are equipped with removable panels to access the fan motor assemblies easily. Standard decorative exposed unit's inner surfaces for the cooling coil section and entire return air cabinet section are insulated with NBR Elastomeric closed cell Foam insulation, 50kg/m³ density and galvanized steel drain pan is polyester powder coated on both sides & insulated outside. Standard decorative exposed units are with removable type double deflection supply air grill, complete unit (RAL9002) and grill (RAL9016) is polyester powder coated.

2.4 MEL / MELD–Low Static Double Skin Ducted Units & MEH / MEHD–Low Static Double Skin Ducted Units

Carrier standard double skin ducted units are with factory installed plenum section and cleanable aluminum mesh filter. Units are fully enclosed type and equipped with removable panels to access the fan motor assemblies easily. Standards double skin unit's cooling coil section and entire return air plenum section are insulated with NBR Elastomeric closed cell Foam insulation, 50kg/m³ density and galvanized steel drain pan is polyester powder coated on both sides & insulated outside. Unit Insulations are stacked between inner & outer galvanized steel panels.

2.5 Fan

Standard units are with direct driven double width fan wheels with forward curved blades are statically and dynamically balanced. Fan scrolls and wheels are constructed of galvanized steel.

2.6 Coils

Standard FCUs are equipped with a 4-row coil for installation in a 2 pipe system. All coils are with 9.52mm seamless copper tubes and aluminum fins. Coil fins are mechanically bonded to copper pipes. Coils are with threaded male pipe connections for easy field piping. All coils are tested with Nitrogen (N2) pressure at 350psi (2413 kpa) submerged in water and working pressure is 250psi (1724 kpa). The cooling coil performance is tested under Eurovent standards as a complete unit.

2.7 Operating Characteristics

Fan coil units installed in a 2-pipe system shall be capable of providing cooling as determined by the operating mode of the central water supply system.

2.8 Electrical Requirements

The standard unit operates on 220/240V, single phase, 50Hz electric power, with all internal wirings meticulously done in flexible conduits to elevate safety levels and provide robust physical protection for electrical cables.

2.9 Motor (s)

Fan motors are 3-speed, 220/240V, and single phase, 50Hz, Class B, Permanent Split Capacitor, & Lubricated Ball Bearing.

The fan motor(s) shall be equipped with integral Automatic temperature reset for motor protection.



Controller (Optional)

Electronically Commutated Motor (ECM) is available for all sizes as Optional feature.

2.10 Filter

The filters are factory installed aluminum mesh type, permanent, washable and 25 mm thick G2 class as standard. Filter is provided with lifting latches on both the sides of filter frame for easy access from rear side as standard. (Lift and pull). Bottom removal can be provided as an optional feature and should be specified during the ordering stage.

Arrestance or Dust Spot Efficiency	US ASHRAE 52.2	European Union EN779 Class	
AFI 65% - 70%	MERV 2	G2	65% ≤ Am ≤ 80%



Manufacturer reserves the right to discontinue, or change at any time, specifications or designs without notice and without incurring obligations.
42ME-PDC2312-VS02