

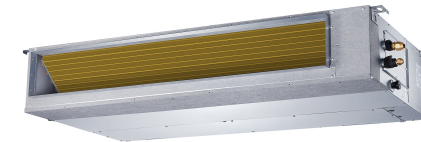


Technical Specification

R410A Split System

Indoor model			42QSM018VSG	42QSM024VSP	42QSM036VSP	42QSM048VT	42QSM060VT
Outdoor model			38QSM018VSG	38QSM024VSP	38QSM036VSP	38QSM048VT	38QSM060VT
Power supply (Outdoor)		V- Ph-Hz	220-240V~, 1Ph, 50/60Hz	220-240V~, 1Ph, 50/60Hz	220-240V~, 1Ph, 50/60Hz	380-415V, 3N~, 50/60Hz	380-415V, 3N~, 50/60Hz
Cooling(T1)	Capacity	Btu/h	18800	25300	34800	48000	54000
	Input	W	1480	1950	2800	3990	4500
	Rated current	A	6.5	8.6	12.5	6.0	6.9
	EER	W/W	12.70	12.97	12.43	12.03	12.00
Cooling(T3)	Capacity	Btu/h	16700	22400	31400	47200	50000
	Input	W	1840	2410	3490	5360	5500
	Rated current	A	8.1	10.6	15.5	8.2	8.5
Heating	EER	W/W	9.08	9.29	9.00	8.81	9.09
	Capacity	Btu/h	6100	8070	10000	17000	17100
	Input	W	1530	2160	2440	4550	4470
	Rated current	A	6.7	9.5	11.0	7.1	6.8
COP	W/W	3.99	3.74	4.10	3.74	3.83	
Indoor air flow (Hi/Mi/Lo)		m3/h	970/805/630	1365/1100/880	2250/1880/1360	2850/2430/1980	3370/2950/2470
ESP	Rated	Pa	25	25	37	50	50
	Range	Pa	0-100	0-160	0-160	0-200	0-200
Indoor noise level (Hi/Mi/Lo)		dB(A)	43/39/34	40/38/36	49/46/43	50/47/44	50/47.5/45
Indoor unit	Dimension(W*D*H)	mm	880x674x210	1100x774x249	1200x874x300	1200x625x380	1400x858x440
	Packing (W*D*H)	mm	1070x725x270	1305x805x305	1405x915x365	1485x675x460	1605x910x515
	Net/Gross weight	Kg	25.8/31	32.6/39.9	44.5/52.7	57/64.7	75.5/86.3
Drainage water pipe dia		mm	ODΦ25	ODΦ25	ODΦ25	ODΦ25	ODΦ25
Compressor	Type		ROTARY	ROTARY	ROTARY	ROTARY	ROTARY
	Dimension(W*D*H)	mm	890x342x673	946x410x810	946x410x810	952x415x1333	952x415x1333
Outdoor unit	Packing (W*D*H)	mm	995x435x750	1090x500x875	1090x500x875	1095x495x1480	1095x495x1480
	Net/Gross weight	Kg	43.4/46.7	58.6/63.2	66.0/70.9	107.5/121.5	110.0/124.0
	Refrigerant type	Kg	R410A/1.60	R410A/2.20	R410A/3.20	R410A/4.20	R410A/4.60
Refrigerant piping	Liquid side/ Gas side	mm(inch)	Φ6.35/Φ12.7(1/4"/1/2")	Φ9.52/Φ15.9(3/8"/5/8")	Φ9.52/Φ19(3/8"/3/4")	Φ9.52/Φ19(3/8"/3/4")	Φ9.52/Φ22(3/8"/7/8")
	Max. refrigerant pipe length	m	25	25	30	50	50
	Max. difference in level	m	15	15	20	30	30
Thermostat type			Wire Control	Wire Control	Wire Control	Wire Control	Wire Control
Room temperature	Indoor(cooling/ heating)	℃	17 ~ 32/0 ~ 30	17 ~ 32/0 ~ 30	17 ~ 32/0 ~ 30	17 ~ 32/0 ~ 30	17 ~ 32/0 ~ 30
	Outdoor(cooling/heating)	℃	0 ~ 52/-15 ~ 24	0 ~ 52/-15 ~ 24	0 ~ 52/-15 ~ 24	0 ~ 52/-15 ~ 24	0 ~ 52/-15 ~ 24

18K - 24K - 36K



48K - 60K



Ducted Split Air Conditioner



* All specifications subject to change without prior notice according to Carrier policy of continuous development.

Inverter Technology

More Economical

Besides the compressor motor, both the indoor and outdoor fan motors are brushless DC type. Owing to the function of brushless DC motors, the 3D DC Inverter air conditioner gains higher efficiency and makes quieter operation which helps save more energy and enhance comfort.



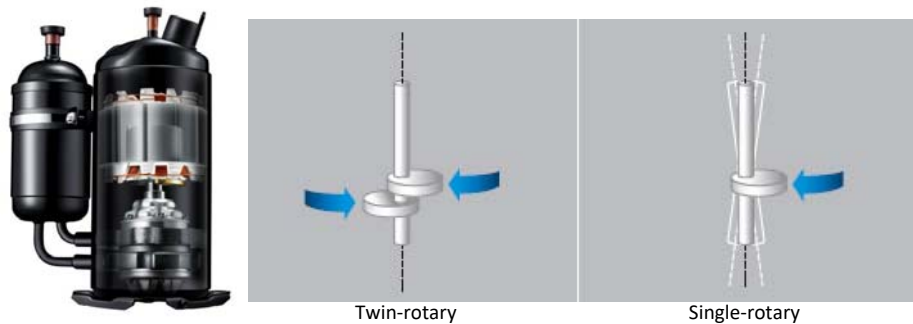
Twin-rotary Inverter Compressor

High Efficiency

Rotating with two rollers at the same time makes accurate compressor rotation with less energy loss. Great performance in part load which leads to a lower seasonal power consumption.

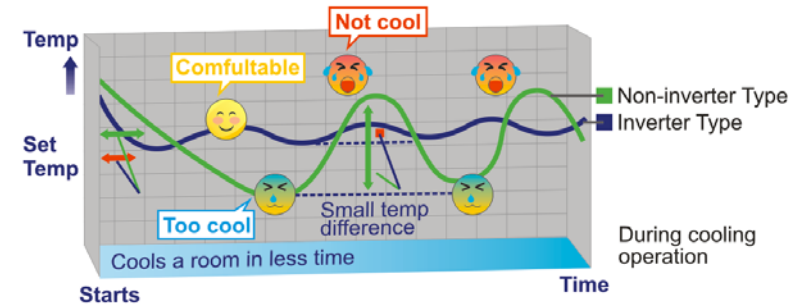
High reliability and lower noise

Deliver stable performance with less vibration.



More Comfortable

After quickly reaching the set temperature, Inverter air conditioner finely adjusts output power to maintain a constant temperature with minimal fluctuation, and guarantees a pleasant, comfortable environment.



More Powerful and Reliable

The advanced compressor and inverter control is designed to deliver comfortable, cooling air, even with outside temperatures as high as 60° C.



Control box cooling down system

Key Features

Ceiling concealed ducted split is the optimum air conditioning solution for places which require ceiling installation above false ceiling and minimum sound levels.

Its slim profile and flexible installation make this system the best choice for residential and light commercial applications where the units are practically hidden from view.

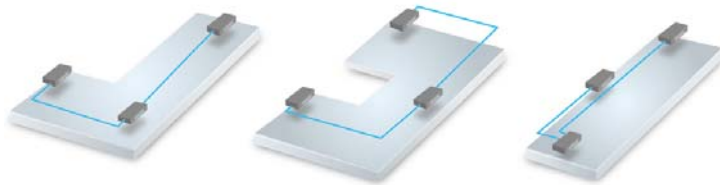
Modern Slim Design

Compact invisible indoor unit with ultra slim profile and low height, is suitable for low false ceiling applications.



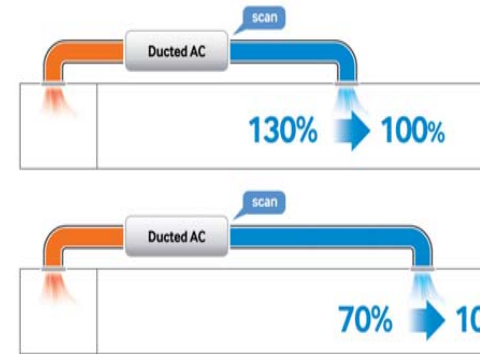
Multi Air Outlets

The air duct can have multi air outlets, creating average cooling for various shapes of room.

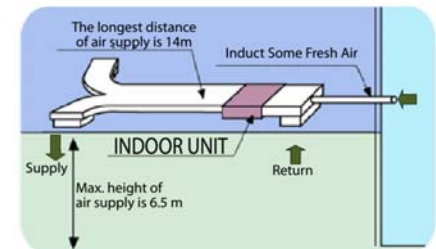
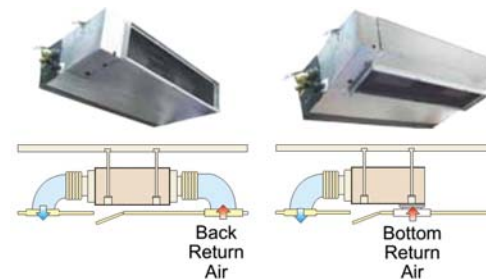


Easy and Flexible Installation

- After installation, it is possible the actual duct resistance is lower than expected at the time of designing. As a consequence, the air flow will be too high.
- With the automatic air flow adjustment function the unit can adapt its fan speed to a lower curve, so the air flow decreases. Instead to increase air flow if there is more resistance.



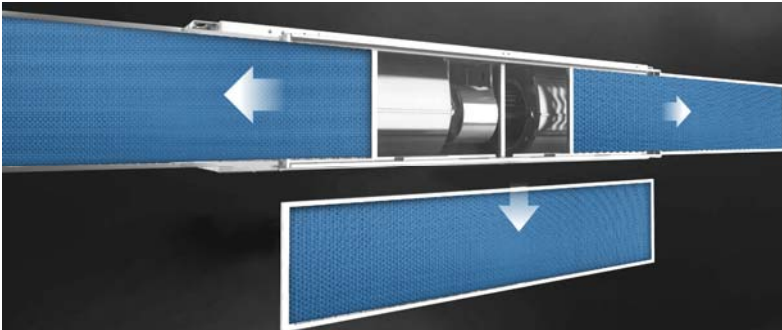
- Flexible two directions of air return (18K-24K-36K): Back air return (factory standard) and Bottom air return (can be done at field).
- High external static pressure design (48K-55K): suitable for Long Duct Connection.



Key Features

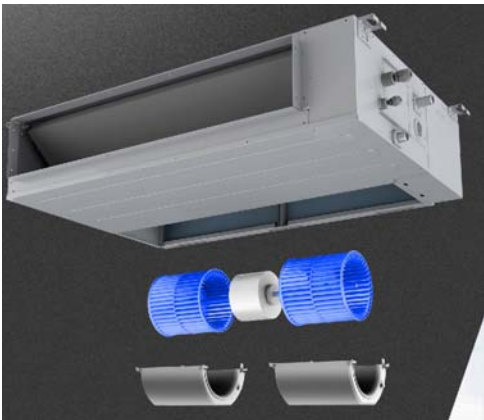
Easy Clean Filter

The filter can be pulled out from left, right, or from the bottom for easy cleaning.



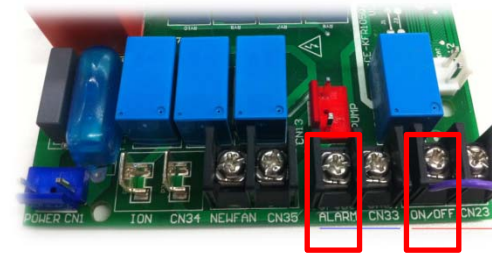
Easy Maintenance

Easy accessibility motors and fans on indoor unit for easy service and maintenance.



Easy Control

- Remote system alarm function which required for some applications such as computer rooms for fast and easy service and maintenance.
- Remote ON / OFF function provides more easy ON / OFF central control of ducted split system.



- Optional with different controls.

